

VARIOUS SIZES AVAILABLE

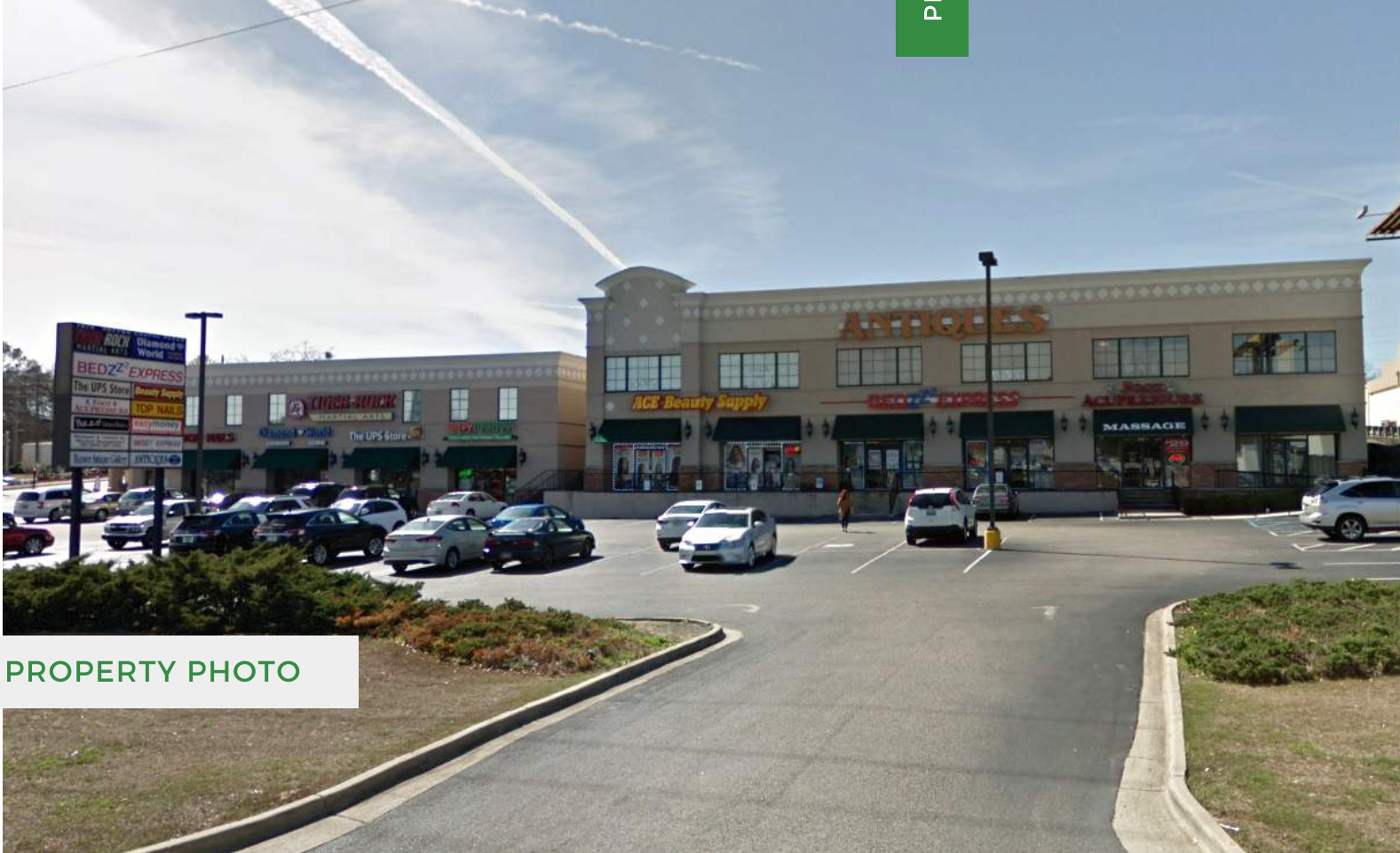
PATTON CHAPEL PLAZA

1676 MONTGOMERY HIGHWAY HOOVER, AL 35216

PROPERTY FOR LEASE



205.823.3030
TheRetailCompanies.com



PROPERTY PHOTO

QUICK FACTS

- Located in the highly-desired Hoover retail submarket
- Property located 1 mile north of the Riverchase Galleria
- Direct visibility from Highway 31 (35,470 VPD)
- Pylon signage is available

This information contained herein was obtained from sources deemed to be reliable; however The Retail Companies makes no guarantees, warranties, or representations as to the completeness or accuracy thereof.

CALL FOR PRICING

Bill Clements, CCIM

Bill@TheRetailCompanies.com
205.823.3070

Real Estate Is Our Passion

1841 Montclair Lane, Suite 102
Birmingham, AL 35216

Brooks Corr, CCIM

Brooks@TheRetailCompanies.com
205.823.3080

VARIOUS SIZES AVAILABLE

PATTON CHAPEL PLAZA

1676 MONTGOMERY HIGHWAY HOOVER, AL 35216



The
**Retail
Companies**
Real Estate Is Our Passion.

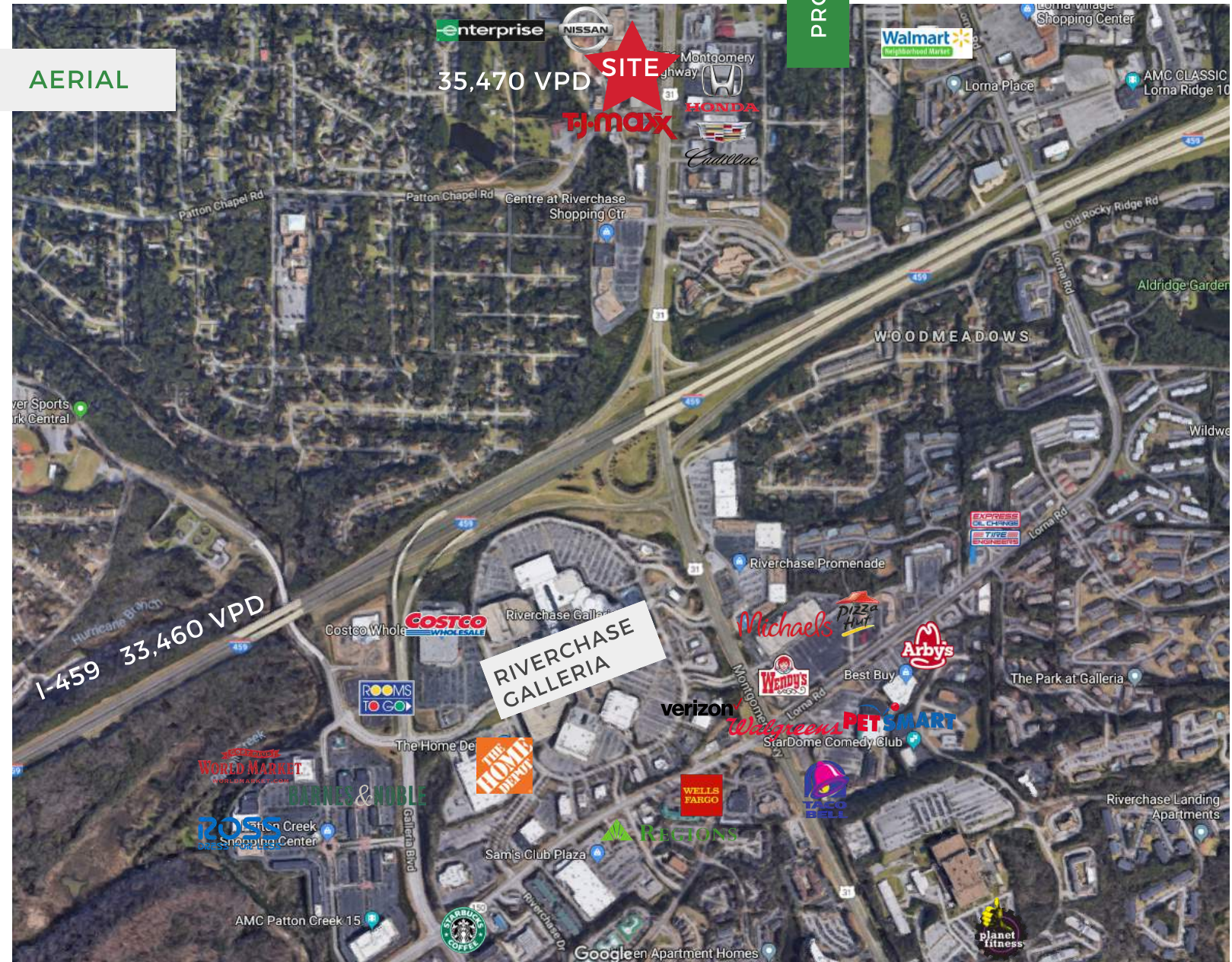
205.823.3030

TheRetailCompanies.com

PROPERTY FOR LEASE

AERIAL

35,470 VPD **SITE**
TJ-maxx






Bill Clements, CCIM
Bill@TheRetailCompanies.com
205.823.3070

Real Estate Is Our Passion
1841 Montclair Lane, Suite 102
Birmingham, AL 35216

Brooks Corr, CCIM
Brooks@TheRetailCompanies.com
205.823.3080

1st Floor

		AVAILABLE 2,100 SF	 The UPS Store				FOOT MASSAGE
---	---	-----------------------	--	---	---	---	-----------------

*Not to scale

2nd Floor

Hoover
Antiques
9,100 SF

AVAILABLE
4,417 SF

World
Class Tae
Kwon Do



*Not to scale

VARIOUS SIZES AVAILABLE

PATTON CHAPEL PLAZA

1676 MONTGOMERY HIGHWAY HOOVER, AL 35216

PROPERTY FOR LEASE



The
Retail
Companies
Real Estate Is Our Passion.

205.823.3030

TheRetailCompanies.com

DEMOGRAPHICS

	1 mile	3 miles	5 miles
Population			
2000 Population	7,654	57,536	105,510
2010 Population	7,910	65,054	122,720
2018 Population	7,970	67,681	131,042
2023 Population	7,981	69,183	135,425
2000-2010 Annual Rate	0.33%	1.24%	1.52%
2010-2018 Annual Rate	0.09%	0.48%	0.80%
2018-2023 Annual Rate	0.03%	0.44%	0.66%
2018 Male Population	49.9%	47.7%	48.0%
2018 Female Population	50.1%	52.3%	52.0%
2018 Median Age	34.8	36.5	38.1

	1 mile	3 miles	5 miles
Median Household Income			
2018 Median Household Income	\$53,154	\$64,633	\$75,616
2023 Median Household Income	\$59,789	\$73,952	\$82,639
2018-2023 Annual Rate	2.38%	2.73%	1.79%
Average Household Income			
2018 Average Household Income	\$71,151	\$90,276	\$104,614
2023 Average Household Income	\$80,154	\$99,837	\$113,974
2018-2023 Annual Rate	2.41%	2.03%	1.73%
Per Capita Income			
2018 Per Capita Income	\$29,400	\$38,434	\$43,254
2023 Per Capita Income	\$32,919	\$42,338	\$47,023
2018-2023 Annual Rate	2.29%	1.95%	1.68%

CALL FOR PRICING

Bill Clements, CCIM
Bill@TheRetailCompanies.com
205.823.3070

Real Estate Is Our Passion
1841 Montclair Lane, Suite 102
Birmingham, AL 35216

Brooks Corr, CCIM
Brooks@TheRetailCompanies.com
205.823.3080