

3,000 SF FOR LEASE

FREESTANDING ALABASTER BUILDING

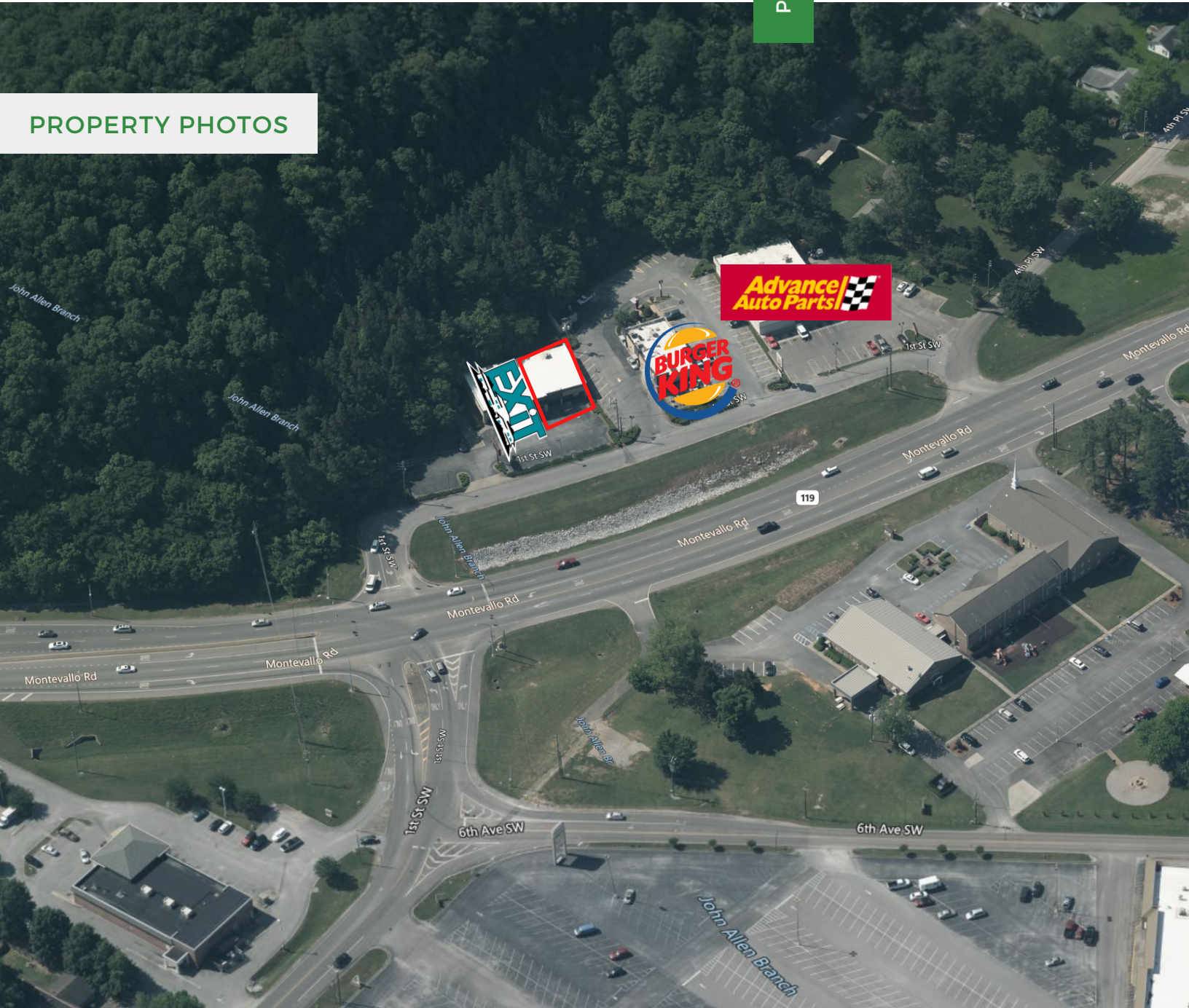
669 1ST ST SOUTHWEST, ALABASTER AL

PROPERTY FOR LEASE



205.823.3030
TheRetailCompanies.com

PROPERTY PHOTOS



This information contained herein was obtained from sources deemed to be reliable; however The Retail Companies makes no guarantees, warranties, or representations as to the completeness or accuracy thereof.

CALL FOR PRICING

Bill Clements, CCIM

Bill@TheRetailCompanies.com
205.823.3070

Real Estate Is Our Passion

1841 Montclair Lane, Suite 102
Birmingham, AL 35216

Brooks Corr, CCIM

Brooks@TheRetailCompanies.com
205.823.3080

3,000 SF FOR LEASE

FREESTANDING ALABASTER BUILDING

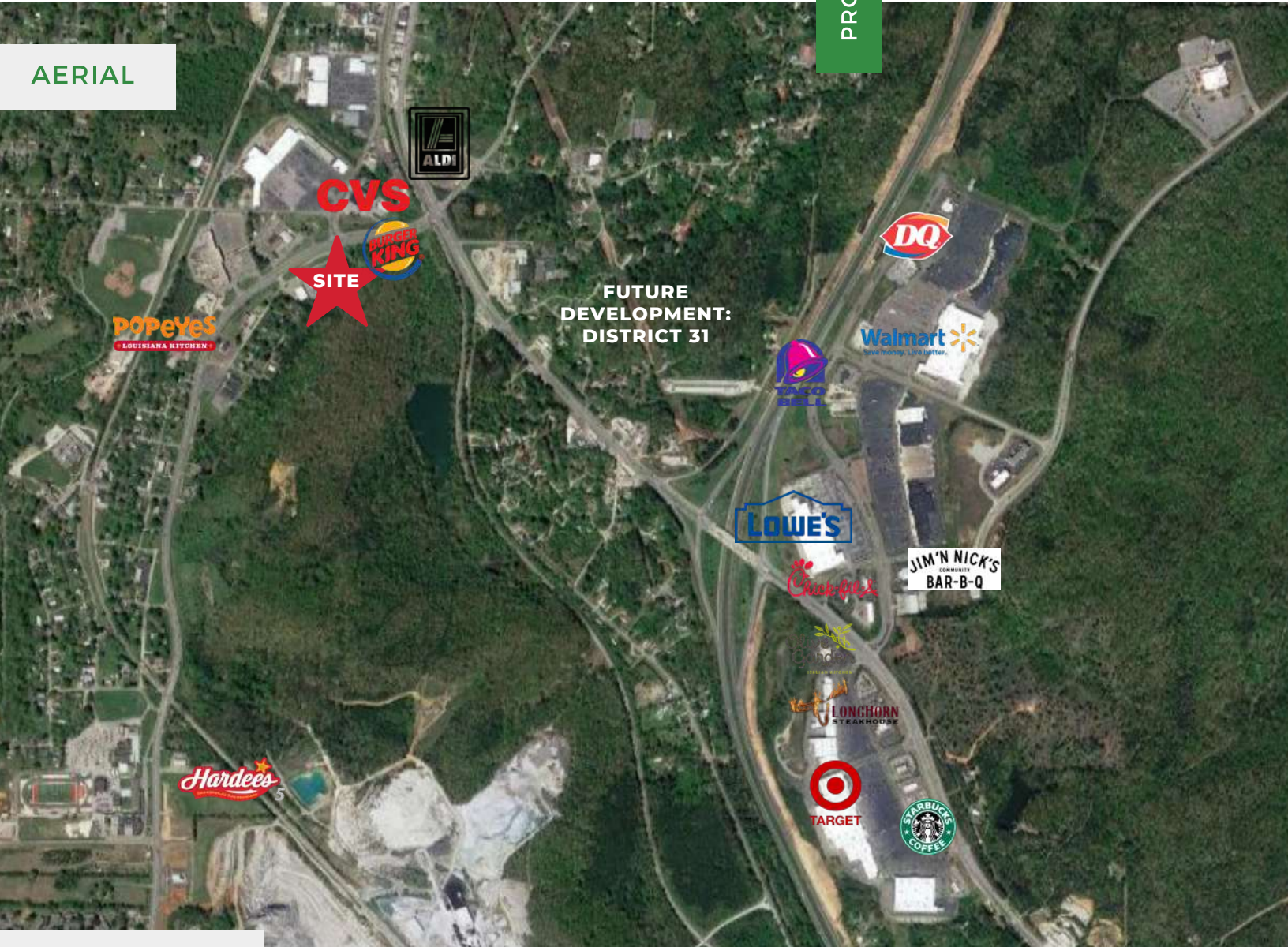
669 1ST ST SOUTHWEST, ALABASTER AL 35007

PROPERTY FOR LEASE



205.823.3030
TheRetailCompanies.com

AERIAL



QUICK FACTS

- Great finishes throughout
- Prime location along Hwy 119 in Alabaster with nearby major retail, dining, and hotels
- 34 parking spaces (5.3/1,000 sf)
- Close to Hwy 31 & I-65 with more than 25,000 VPD
- Can be subdivided

Bill Clements, CCIM
Bill@TheRetailCompanies.com
205.823.3070

Real Estate Is Our Passion
1841 Montclair Lane, Suite 102
Birmingham, AL 35216

Brooks Corr, CCIM
Brooks@TheRetailCompanies.com
205.823.3080

3,000 SF FOR LEASE

FREESTANDING ALABASTER BUILDING

669 1ST ST SOUTHWEST, ALABASTER AL 35007

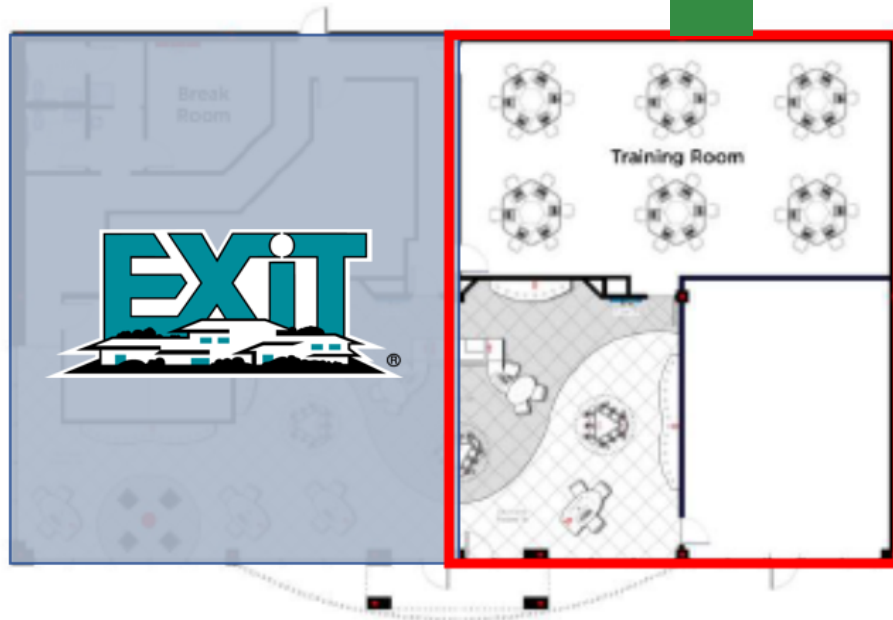
PROPERTY FOR LEASE



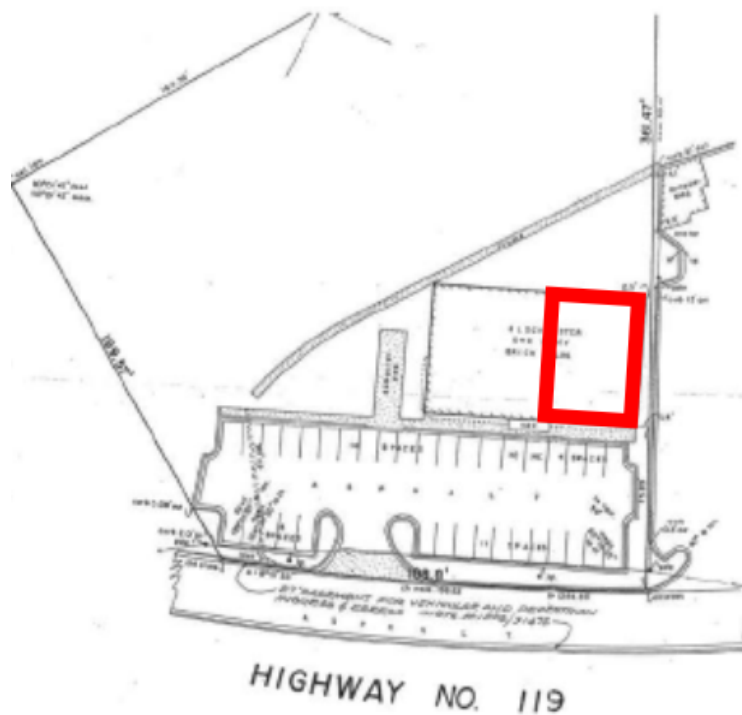
The
**Retail
Companies**
Real Estate Is Our Passion.

205.823.3030

TheRetailCompanies.com



SITE PLAN



Bill Clements, CCIM
Bill@TheRetailCompanies.com
205.823.3070

Real Estate Is Our Passion
1841 Montclair Lane, Suite 102
Birmingham, AL 35216

Brooks Corr, CCIM
Brooks@TheRetailCompanies.com
205.823.3080

3,000 SF FOR LEASE

FREESTANDING ALABASTER BUILDING

669 1ST ST SOUTHWEST, ALABASTER AL 35007

PROPERTY FOR LEASE



205.823.3030
TheRetailCompanies.com

DEMOGRAPHICS

	1 mile	3 miles	5 miles
Population			
2000 Population	3,085	25,780	42,083
2010 Population	3,123	31,441	57,689
2019 Population	3,223	34,087	64,364
2024 Population	3,313	35,747	68,577
2000-2010 Annual Rate	0.12%	2.00%	3.20%
2010-2019 Annual Rate	0.34%	0.88%	1.19%
2019-2024 Annual Rate	0.55%	0.96%	1.28%
2019 Male Population	48.2%	48.8%	48.7%
2019 Female Population	51.8%	51.2%	51.3%
2019 Median Age	37.6	36.7	36.3
	1 mile	3 miles	5 miles
Mortgage Income			
2019 Percent of Income for Mortgage	11.7%	12.2%	11.9%
Median Household Income			
2019 Median Household Income	\$57,945	\$69,243	\$75,352
2024 Median Household Income	\$63,751	\$78,220	\$83,812
2019-2024 Annual Rate	1.93%	2.47%	2.15%
Average Household Income			
2019 Average Household Income	\$67,472	\$85,361	\$89,866
2024 Average Household Income	\$76,890	\$97,646	\$102,162
2019-2024 Annual Rate	2.65%	2.73%	2.60%
Per Capita Income			
2019 Per Capita Income	\$23,667	\$30,333	\$32,151
2024 Per Capita Income	\$26,878	\$34,621	\$36,403
2019-2024 Annual Rate	2.58%	2.68%	2.52%

CALL FOR PRICING

Bill Clements, CCIM
Bill@TheRetailCompanies.com
205.823.3070

Real Estate Is Our Passion
1841 Montclair Lane, Suite 102
Birmingham, AL 35216

Brooks Corr, CCIM
Brooks@TheRetailCompanies.com
205.823.3080