

SINGLE TENANT OFFERING

PRINT PROMOTIONS GROUP [ENCOMPASS HEALTH]

BIRMINGHAM, AL (MSA)



OFFERING SUMMARY



\$3,625,000
CAP RATE 7.0%



LOT SIZE
1.0 ACRE



NOI
\$252,931



GROSS LEASABLE AREA
36,133 SF



YEAR BUILT
1984

2100 Columbiana Road
VESTAVIA HILLS, AL 35216

CLICK FOR AERIAL TOUR

BIRMINGHAM, AL



THE CITY

The City of Birmingham, Alabama is a municipal corporation under the laws of the State of Alabama. Birmingham is the largest city in the state with a population currently estimated at 212,237, and a metro population of 1,136,650. Nestled at the foothills of the Appalachian Mountains at the cross-section of two major railroads, the city was once the primary industrial center of the southern United States. At the height of the nation's manufacturing age, the city grew so fast in population, it was called the "Magic City." Today, Birmingham has transformed itself into a medical research, banking and service-based economy, making it one of the nation's most livable cities with a vibrant downtown, a burgeoning loft community, a world-class culinary scene and more green space per capita than any other city in the nation.

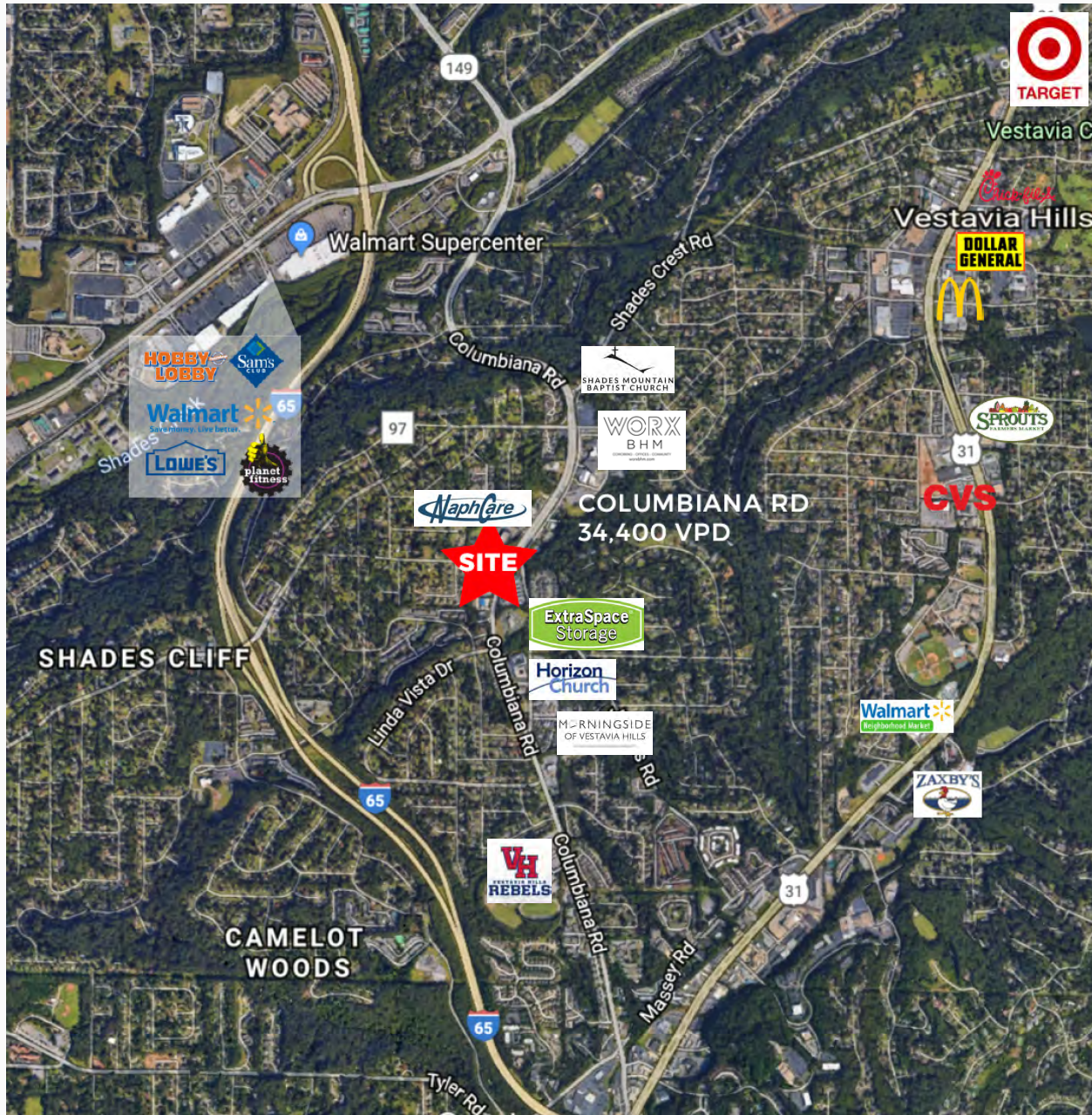
BIRMINGHAM STATS

- Ranks 13th among the largest southeastern metropolitan areas
- Represents 22 percent of Alabama's total population
- Represents 31 percent of Alabama's total payroll dollars
- Ranks 48th in population among the nation's top 366 metropolitan areas
- Home to 40,680 Businesses
- Ranks 98th in population among the nation's 285 largest cities

TOP 10 EMPLOYERS

- University of Alabama at Birmingham
- Regions Financial Corporation
- Children's of Alabama
- AT&T
- Honda Manufacturing of Alabama
- St. Vincent's Health System
- Brookwood Health System
- Mercedes-Benz U.S. International Inc.
- Blue Cross and Blue Shield of Alabama
- Alabama Power Co.

AMENITIES AERIAL



Walmart

LOWE'S

HOBBY LOBBY

Sam's CLUB

PROPERTY AERIAL (FACING NORTH)



PROPERTY AERIAL (FACING SOUTH)



PROPERTY AERIAL



[CLICK FOR AERIAL TOUR](#)

SITE PLAN

VPD

43,400

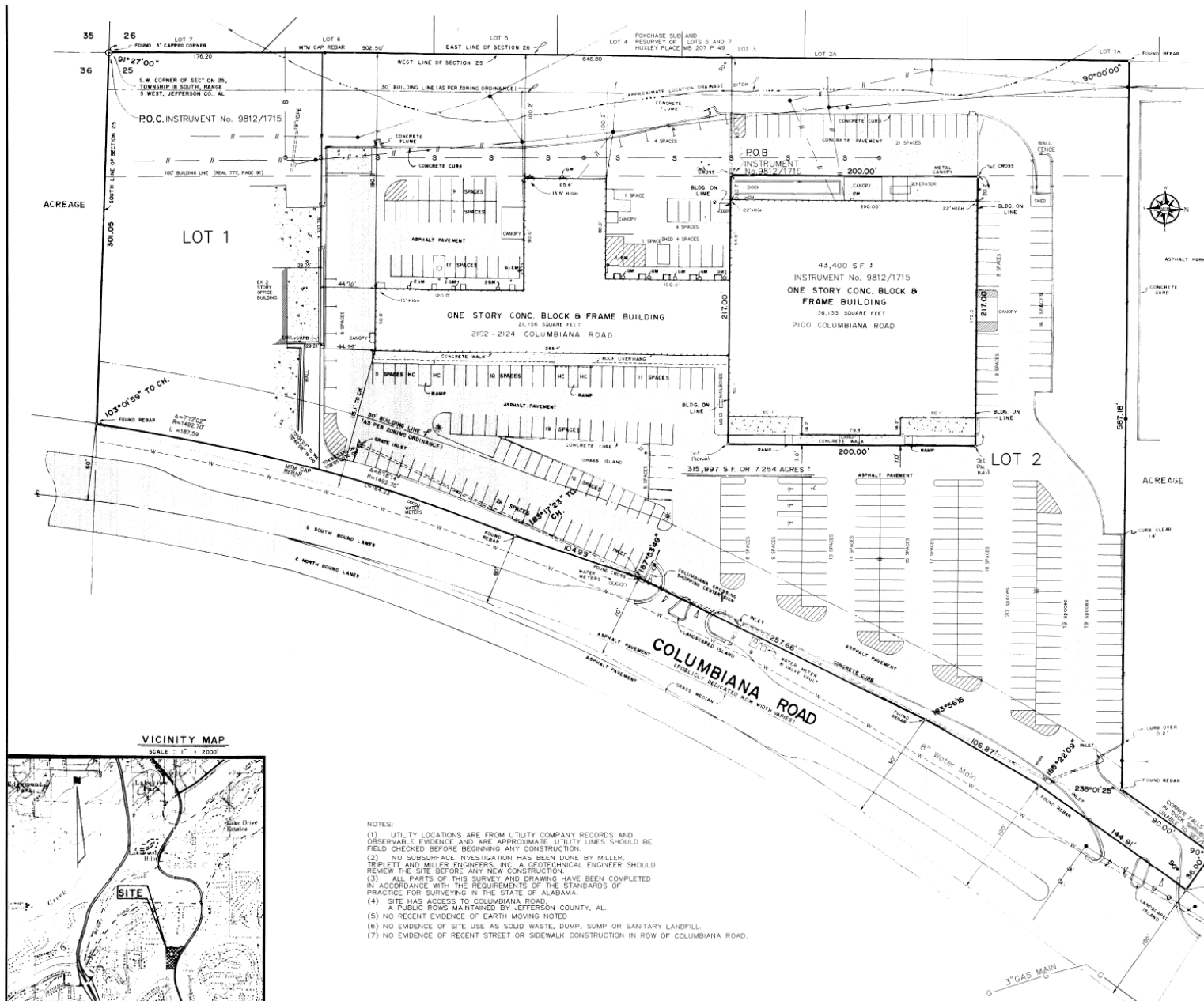
PROPERTY SIZE

1.0 ACRE

PARKING SPOTS

202





FINANCIAL OVERVIEW



LEASE SUMMARY

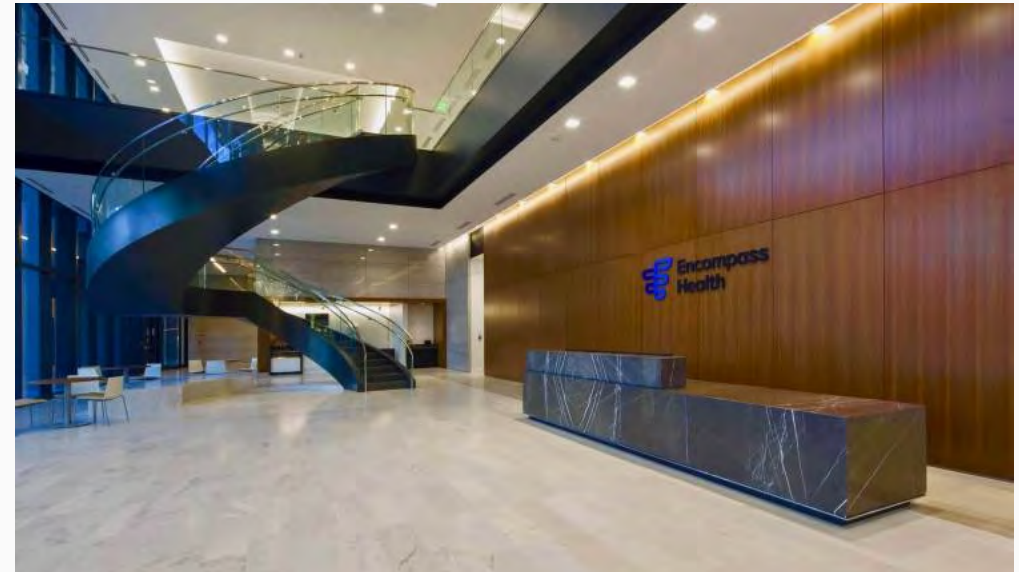
LEASE TYPE	NNN
ROOF & STRUCTURE	Landlord
LEASE TERM	8 Years, 7 Months
RENT COMMENCEMENT	8/01/2019
RENT EXPIRATION	2/28/2028
INCREASES	2% Annually
OPTIONS	Two, 5-Year

RENT SCHEDULE

TERM	ANNUAL RENT	MONTHLY RENT
YEAR 1	\$252,931.00	\$21,077.58
YEAR 2	\$257,989.62	\$21,499.14
YEAR 3	\$263,149.41	\$21,929.12
YEAR 4	\$268,412.40	\$22,367.70
YEAR 5	\$273,780.65	\$22,815.05
YEAR 6	\$279,256.26	\$23,271.36
YEAR 7	\$284,841.39	\$23,736.78
YEAR 8	\$290,538.21	\$24,211.52
OPTION 1 & 2	2% Annually	

*NNN - Fully Reimbursed \$44,705/yr (\$1.24/sf)

CORPORATE GUARANTY



Print Promotions Group LLC is a wholly owned subsidiary of Encompass Health Corporation (NYSE: EHC) , the \$7.5 Billion NYSE-listed corporation until recently known as HealthSouth.

Encompass Health Corporation guarantees this lease.

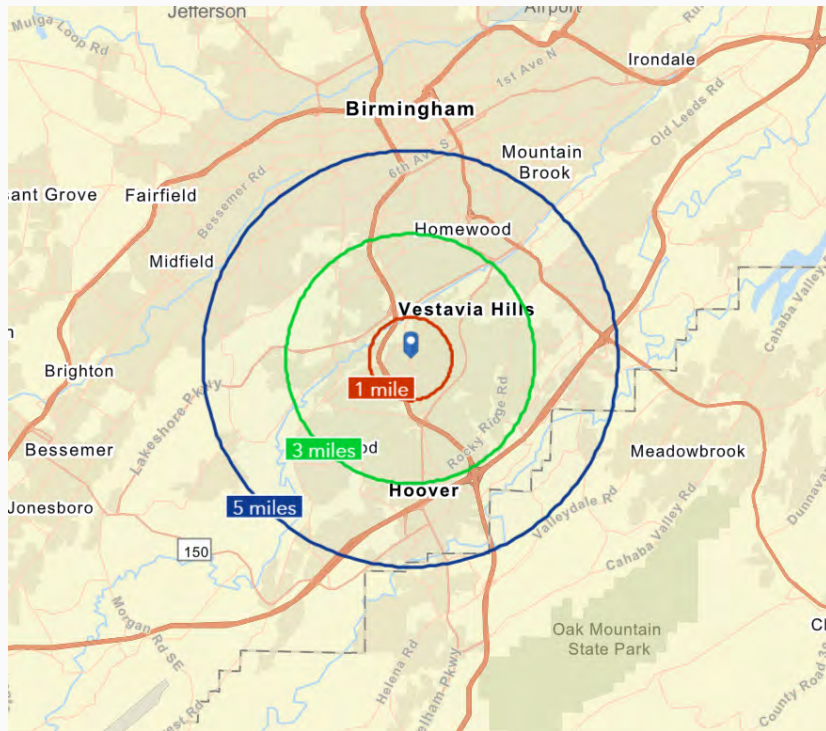
Print Promotions Group opened its doors to service Encompass Health in September of 1996. Their mission is to be the print and promotional provider of choice for all Encompass Health divisions, departments and hospitals by delivering the highest quality products and services. Providing solutions for their customers is PPG's top priority. Located in a 36,133 square foot facility in Vestavia, PPG has print capabilities of a full digital line of print capabilities. HP Indigo, Xerox, and Fuji all enable PPG to provide high quality products to their customers.

TENANT OVERVIEW

- Print Promotions Group, LLC [Corporately Guaranteed by Encompass Health]
- +/- 1 Acre with cross access easements on remainder of shopping center property
- 1984 (renovated multiple times over past years) PPG invested over \$1M in '19
- City of Vestavia/Jefferson County
- Tax Parcel ID: 29 00 25 3 001 015.002
- Zoning: B-2
- Monument Signage & Façade Signage
- The facility is separately owned with an easement that controls 202 parking spaces.



DEMOGRAPHICS



POPULATION

	0-1 MILE	1-3 MILE	3-5 MILE
2000 POP	7,911	60,562	160,298
2010 POP	8,548	64,720	164,577
2019 POP	8,851	66,389	173,762
2024 POP	9,012	67,466	178,790
2000-2010 ANN. RATE	0.78%	0.67%	0.26%
2010-2019 ANN. RATE	0.42%	0.31%	0.66%
2019-2024 ANN. RATE	0.36%	0.32%	0.57%
2019 MALE POP	47.9%	47.7%	47.7%
2019 FEMALE POP	52.1%	52.3%	52.3%
2019 MEDIAN AGE	37.7	36.1	35.7

MEDIAN HH INCOME

	0-1 MILE	1-3 MILE	3-5 MILE
2019 MEDIAN HH INCOME	\$73,739	\$68,229	\$56,777
2024 MEDIAN HH INCOME	\$81,321	\$76,056	\$63,881
2019-2024 ANN. RATE	1.98%	2.20%	2.39%

AVERAGE HH INCOME

	0-1 MILE	1-3 MILE	3-5 MILE
2019 AVERAGE HH INCOME	\$97,767	\$99,349	\$88,794
2024 AVERAGE HH INCOME	\$107,950	\$107,950	\$97,565
2019-2024 ANN. RATE	2.00%	1.67%	1.90%

PER CAPITA INCOME

	0-1 MILE	1-3 MILE	3-5 MILE
2019 PER CAPITA INCOME	\$43,326	\$41,814	\$38,279
2024 PER CAPITA INCOME	\$47,806	\$45,332	\$42,047
2019-2024 ANN. RATE	1.99%	1.63%	1.90%



CONFIDENTIALITY DISCLAIMER

The information contained herein, including an pro forma income and expense information (collectively, the “Information”) is based upon assumption and projections and has been compiled or modeled from sources we consider reliable and is based on the best available information at the time the brochure was issued. It is propriety and strictly confidential. It is intended to be reviewed only by the party receiving it from The Retail Companies and should not be made available to any other person or entity without the written consent of The Retail Companies, LLC. The Information is subject to change and is not guaranteed as to completeness or accuracy. While we have no reason to believe that the Information set forth in this brochure, underwriting, cash flows, valuation, and other financial information (or any Information that is subsequently provided or made available to you) contains any material inaccuracies, no representations or warranties, express or implied, are made with respect to the accuracy or completeness of the Information. Independent estimates of pro forma income and expenses should be developed before any decision is made on whether to invest in the Property. Summaries of any documents are not intended to be comprehensive or all-inclusive, but rather only outline some of the provisions contained therein and are qualified in their entirety by the actual document to which they relate. You understand that the Information is confidential and is furnished solely for the purpose of your review in connection with a potential investment in the Property. You further understand that the Information is not to be used for any purpose or made available to any other person without express written consent of The Retail Companies, LLC. This offering is subject to prior placement and withdrawal, cancellation, or modification without notice. The information contained herein is not a substitute for a thorough due diligence investigation. This publication is the copyrighted property of The Retail Companies, LLC and/or its licensor(s). ©2019. All rights reserved.



**DEAL PORTAL DOCUMENT ACCESS
(CLICK HERE)**