

ALABAMA HIGHWAY 75

IRON SET  
AT 26.91'

CHAMPION CREEK  
S 45°28'53" W 418.02'

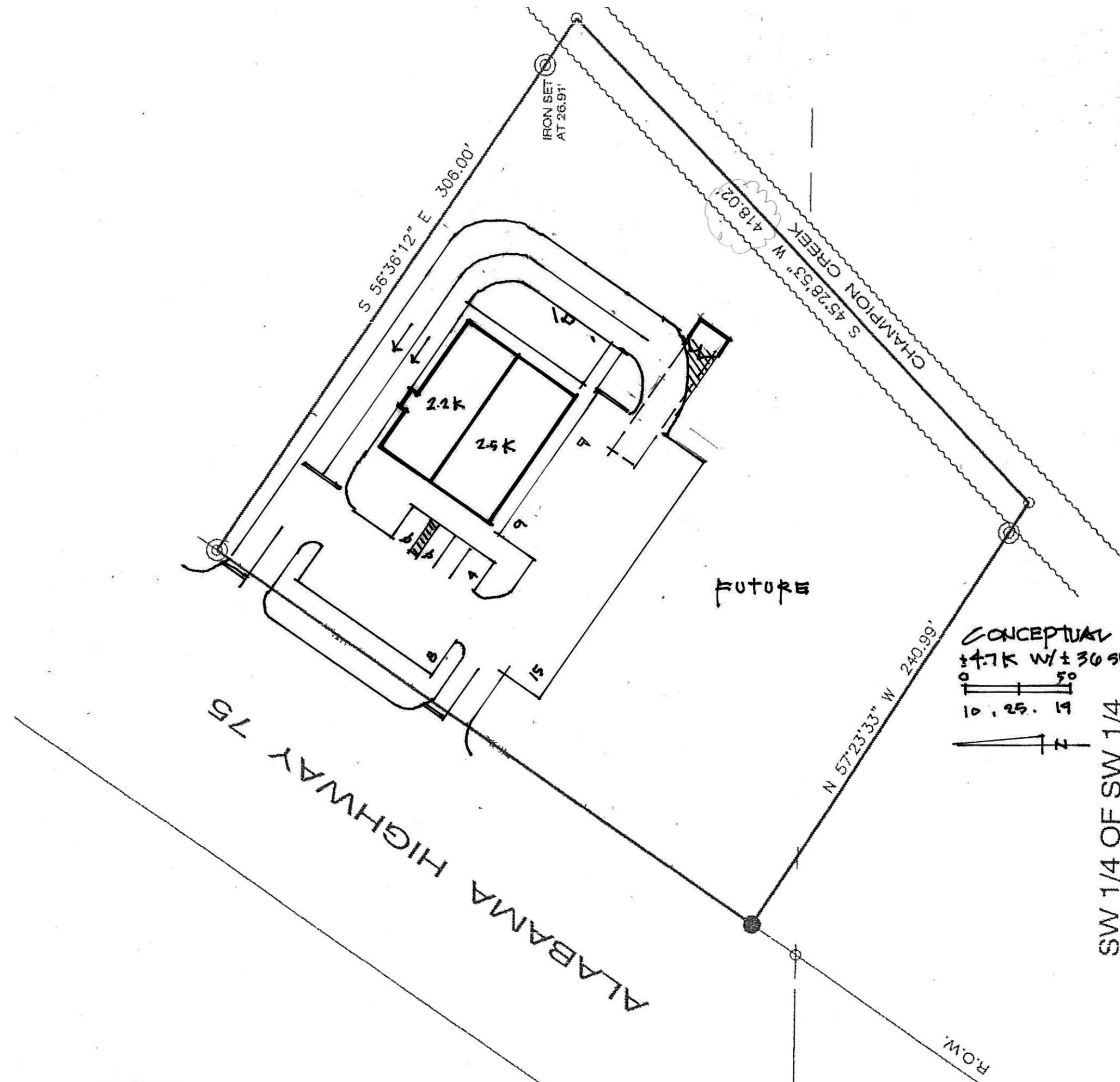
future

N 57°23'33" W 240.99'

R.O.W.

CONCEPTUAL SITE STUDY C  
 14.7K w/ 44 spaces = 9.30/K  
 10 25 19

SW 1/4 OF SW 1/4



IRON SET  
AT 26.91'

CHAMPION CREEK  
S 45°28'53" W 418.02'

FUTURE

N 57°23'33" W 240.99'

ALABAMA HIGHWAY 75

R.O.W.

CONCEPTUAL SITE STUDY D  
 ± 4.7K w/ ± 30 spaces = 7.66/K  
 0 50  
 10 25 19  
 N

SW 1/4 OF SW 1/4