

7,492 SF FOR LEASE  
(CAN SUBDIVIDE)

# HOMEWOOD OPPORTUNITY

2614 19TH STREET SOUTH HOMEWOOD, AL 35209

PROPERTY FOR LEASE



205.823.3030  
TheRetailCompanies.com



PROPERTY PHOTOS



This information contained herein was obtained from sources deemed to be reliable; however The Retail Companies makes no guarantees, warranties, or representations as to the completeness or accuracy thereof.

**CALL FOR PRICING**

**Bill Clements, CCIM**  
Bill@TheRetailCompanies.com  
205.823.3070

**Real Estate Is Our Passion**  
1841 Montclair Lane, Suite 102  
Birmingham, AL 35216

**Brooks Corr, CCIM**  
Brooks@TheRetailCompanies.com  
205.823.3080

7,492 SF FOR LEASE  
(CAN SUBDIVIDE)

# HOMEWOOD OPPORTUNITY

2614 19TH STREET SOUTH HOMEWOOD, AL 35209

PROPERTY FOR LEASE



205.823.3030  
TheRetailCompanies.com

## AERIAL



## TRAFFIC COUNTS

- Highway 280 (79,870 VPD)
- Highway 31 (38,850 VPD)

**Bill Clements, CCIM**  
Bill@TheRetailCompanies.com  
205.823.3070

**Real Estate Is Our Passion**  
1841 Montclair Lane, Suite 102  
Birmingham, AL 35216

**Brooks Corr, CCIM**  
Brooks@TheRetailCompanies.com  
205.823.3080

7,492 SF FOR LEASE  
(CAN SUBDIVIDE)

# HOMEWOOD OPPORTUNITY

2614 19TH STREET SOUTH HOMEWOOD, AL 35209

PROPERTY FOR LEASE



205.823.3030  
TheRetailCompanies.com

## AERIAL



## QUICK FACTS

- Prime midtown location in the heart of downtown Homewood
- Excellent access to Hwy 280 & Hwy 31.
- Direct visibility from Rosedale Dr (end of Hwy 280) (79,870 VPD)
- Monument signage is available.

**Bill Clements, CCIM**  
Bill@TheRetailCompanies.com  
205.823.3070

**Real Estate Is Our Passion**  
1841 Montclair Lane, Suite 102  
Birmingham, AL 35216

**Brooks Corr, CCIM**  
Brooks@TheRetailCompanies.com  
205.823.3080

7,492 SF FOR LEASE  
(CAN SUBDIVIDE)

# HOMEWOOD OPPORTUNITY

2614 19TH STREET SOUTH HOMEWOOD, AL 35209

PROPERTY FOR LEASE



205.823.3030  
TheRetailCompanies.com



7,492 SF AVAILABLE TOTAL:  
5,440 SF FIRST FLOOR  
2,052 BOTTOM LEVEL



**Bill Clements, CCIM**  
Bill@TheRetailCompanies.com  
205.823.3070

**Real Estate Is Our Passion**  
1841 Montclair Lane, Suite 102  
Birmingham, AL 35216

**Brooks Corr, CCIM**  
Brooks@TheRetailCompanies.com  
205.823.3080

7,492 SF FOR LEASE  
(CAN SUBDIVIDE)

# HOMEWOOD OPPORTUNITY

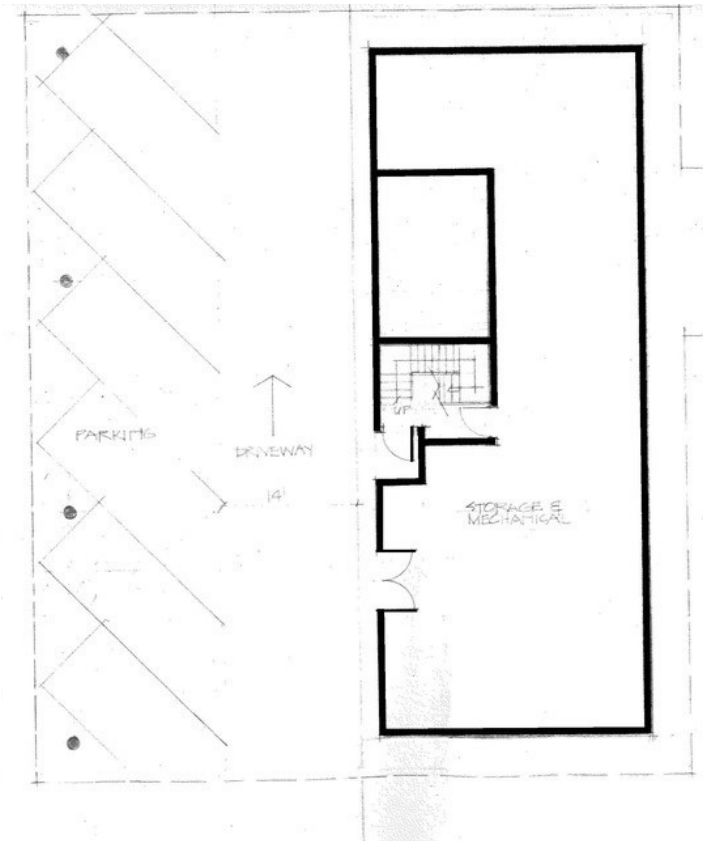
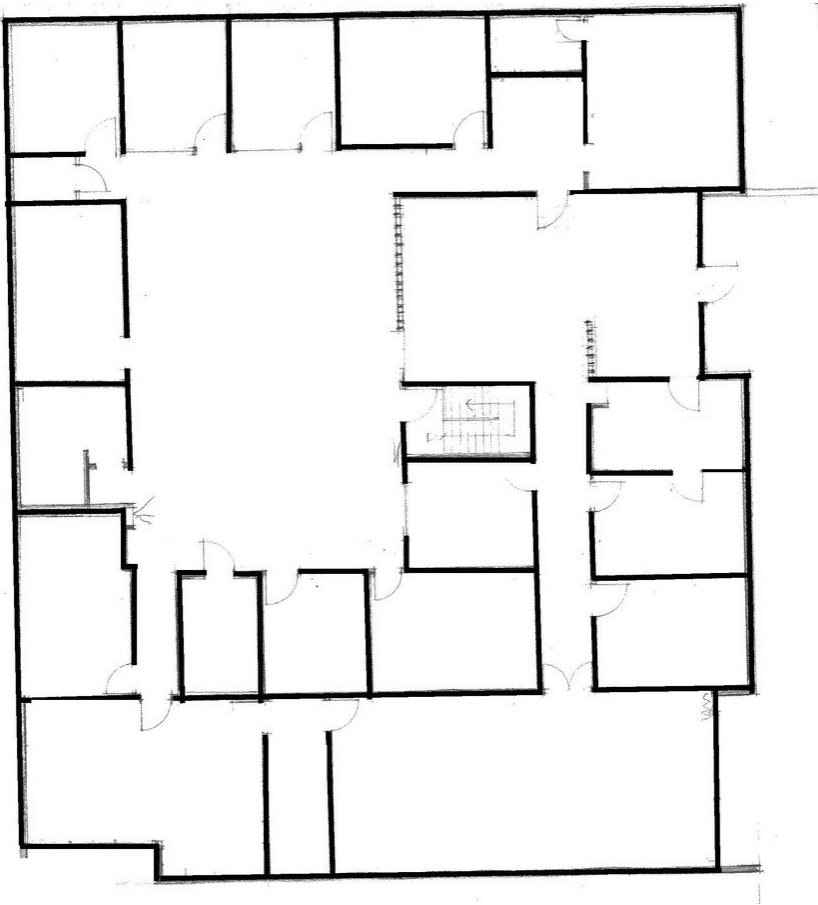
2614 19TH STREET SOUTH HOMEWOOD, AL 35209

PROPERTY FOR LEASE



205.823.3030  
TheRetailCompanies.com

## PROPERTY SITE PLAN



**Bill Clements, CCIM**  
Bill@TheRetailCompanies.com  
205.823.3070

**Real Estate Is Our Passion**  
1841 Montclair Lane, Suite 102  
Birmingham, AL 35216

**Brooks Corr, CCIM**  
Brooks@TheRetailCompanies.com  
205.823.3080

7,492 SF FOR LEASE  
(CAN SUBDIVIDE)

# HOMWOOD OPPORTUNITY

2614 19TH STREET SOUTH HOMWOOD, AL 35209

PROPERTY FOR LEASE



205.823.3030  
TheRetailCompanies.com

## DEMOGRAPHICS

	1 mile	3 miles	5 miles
<b>Population</b>			
2000 Population	10,051	78,443	193,086
2010 Population	9,602	76,697	178,972
2018 Population	10,376	81,670	187,192
2023 Population	11,071	84,674	191,914
2000-2010 Annual Rate	-0.46%	-0.22%	-0.76%
2010-2018 Annual Rate	0.94%	0.76%	0.55%
2018-2023 Annual Rate	1.31%	0.73%	0.50%
2018 Male Population	49.5%	49.1%	48.1%
2018 Female Population	50.5%	50.9%	51.9%
2018 Median Age	33.6	33.9	36.8
	1 mile	3 miles	5 miles
<b>Median Household Income</b>			
2018 Median Household Income	\$64,941	\$48,427	\$47,867
2023 Median Household Income	\$74,910	\$54,181	\$53,419
2018-2023 Annual Rate	2.90%	2.27%	2.22%
<b>Average Household Income</b>			
2018 Average Household Income	\$98,547	\$88,213	\$84,087
2023 Average Household Income	\$107,393	\$95,517	\$91,391
2018-2023 Annual Rate	1.73%	1.60%	1.68%
<b>Per Capita Income</b>			
2018 Per Capita Income	\$45,415	\$40,381	\$37,137
2023 Per Capita Income	\$50,114	\$43,842	\$40,417
2018-2023 Annual Rate	1.99%	1.66%	1.71%

[WATCH PROPERTY VIDEO](#)

[CALL FOR PRICING](#)

**Bill Clements, CCIM**  
Bill@TheRetailCompanies.com  
205.823.3070

**Real Estate Is Our Passion**  
1841 Montclair Lane, Suite 102  
Birmingham, AL 35216

**Brooks Corr, CCIM**  
Brooks@TheRetailCompanies.com  
205.823.3080