

1.73 ACRES/4,680 SF AVAILABLE

FORMER RUBY TUESDAY

258 HWY 78 W, JASPER, AL 35501

PROPERTY FOR SALE OR LEASE



The
Retail
Companies
Real Estate Is Our Passion.

205.823.3030

TheRetailCompanies.com

PROPERTY PHOTOS



This information contained herein was obtained from sources deemed to be reliable; however The Retail Companies makes no guarantees, warranties, or representations as to the completeness or accuracy thereof.

CALL FOR PRICING

Bill Clements, CCIM

Bill@TheRetailCompanies.com
205.823.3070

Real Estate Is Our Passion

1841 Montclair Lane, Suite 102
Birmingham, AL 35216

Brooks Corr, CCIM

Brooks@TheRetailCompanies.com
205.823.3080

1.73 ACRES/4,680 SF AVAILABLE

FORMER RUBY TUESDAY

258 HWY 78 W, JASPER, AL 35501

PROPERTY FOR SALE OR LEASE

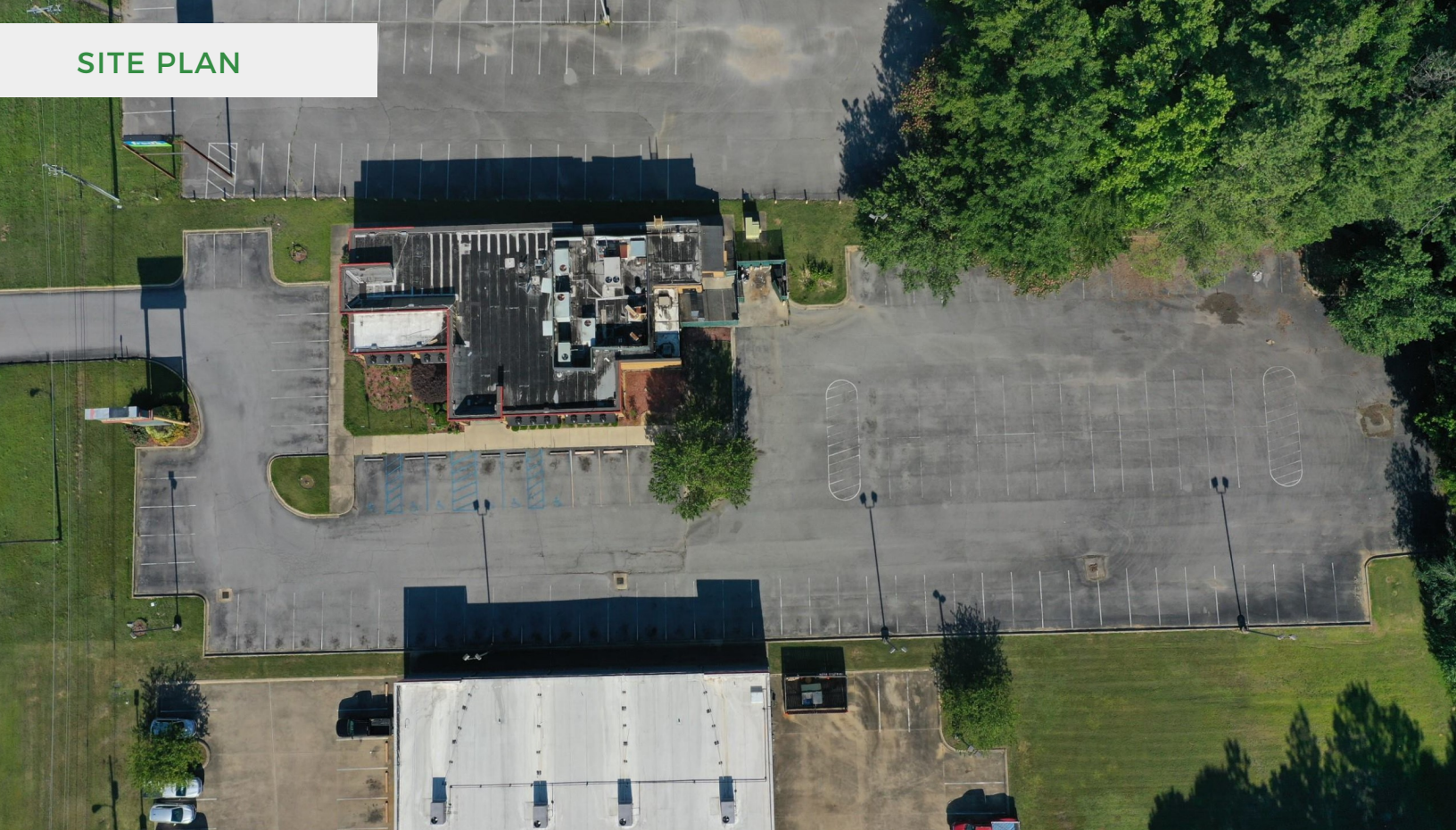


The
**Retail
Companies**
Real Estate Is Our Passion.

205.823.3030

TheRetailCompanies.com

SITE PLAN



QUICK FACTS

- Former Restaurant with FF&E included
- Pylon Signage Available
- Close proximity to Jasper Mall
- Great visibility and accessibility from Highway 78

This information contained herein was obtained from sources deemed to be reliable; however The Retail Companies makes no guarantees, warranties, or representations as to the completeness or accuracy thereof.

CALL FOR PRICING

Bill Clements, CCIM

Bill@TheRetailCompanies.com
205.823.3070

Real Estate Is Our Passion

1841 Montclair Lane, Suite 102
Birmingham, AL 35216

Brooks Corr, CCIM

Brooks@TheRetailCompanies.com
205.823.3080

1.73 ACRES/4,680 SF AVAILABLE

FORMER RUBY TUESDAY

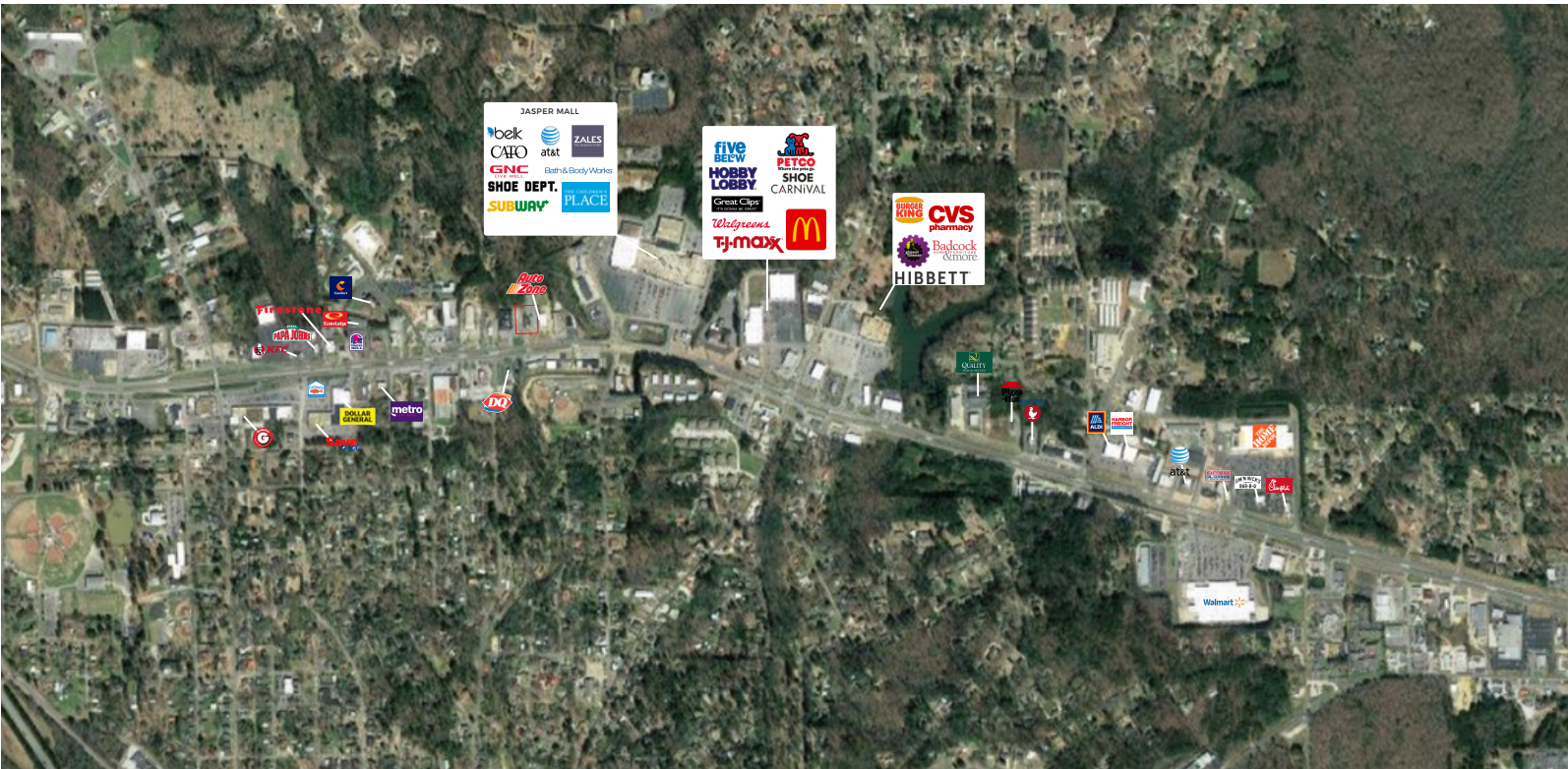
258 HWY 78 W, JASPER, AL 35501

PROPERTY FOR SALE OR LEASE



205.823.3030
TheRetailCompanies.com

MARKET AERIAL



TRAFFIC COUNTS

- 23,470 VPD

This information contained herein was obtained from sources deemed to be reliable; however The Retail Companies makes no guarantees, warranties, or representations as to the completeness or accuracy thereof.

CALL FOR PRICING

Bill Clements, CCIM
Bill@TheRetailCompanies.com
205.823.3070

Real Estate Is Our Passion
1841 Montclair Lane, Suite 102
Birmingham, AL 35216

Brooks Corr, CCIM
Brooks@TheRetailCompanies.com
205.823.3080

1.73 ACRES/4,680 SF AVAILABLE

FORMER RUBY TUESDAY

258 HWY 78 W, JASPER, AL 35501

PROPERTY FOR SALE OR LEASE



The
**Retail
Companies**
Real Estate Is Our Passion.

205.823.3030

TheRetailCompanies.com

DEMOGRAPHICS

	1 mile	3 miles	5 miles
Population			
2000 Population	3,280	13,545	20,364
2010 Population	3,531	13,673	20,632
2021 Population	3,511	13,301	20,159
2026 Population	3,436	12,986	19,703
2000-2010 Annual Rate	0.74%	0.09%	0.13%
2010-2021 Annual Rate	-0.05%	-0.24%	-0.21%
2021-2026 Annual Rate	-0.43%	-0.48%	-0.46%
2021 Male Population	47.6%	47.8%	48.4%
2021 Female Population	52.4%	52.2%	51.6%
2021 Median Age	39.7	43.2	43.3

In the identified area, the current year population is 20,159. In 2010, the Census count in the area was 20,632. The rate of change since 2010 was -0.21% annually. The five-year projection for the population in the area is 19,703 representing a change of -0.46% annually from 2021 to 2026. Currently, the population is 48.4% male and 51.6% female.

Median Age

The median age in this area is 39.7, compared to U.S. median age of 38.5.

Race and Ethnicity

2021 White Alone	81.3%	78.2%	82.6%
2021 Black Alone	9.8%	13.9%	10.2%
2021 American Indian/Alaska Native Alone	0.3%	0.4%	0.5%
2021 Asian Alone	1.6%	1.4%	1.2%
2021 Pacific Islander Alone	0.1%	0.2%	0.2%
2021 Other Race	4.6%	3.8%	3.5%
2021 Two or More Races	2.3%	2.0%	1.8%
2021 Hispanic Origin (Any Race)	7.7%	6.3%	5.9%

Persons of Hispanic origin represent 5.9% of the population in the identified area compared to 18.9% of the U.S. population. Persons of Hispanic Origin may be of any race. The Diversity Index, which measures the probability that two people from the same area will be from different race/ethnic groups, is 38.4 in the identified area, compared to 65.4 for the U.S. as a whole.

Households

2021 Wealth Index	66	64	64
2000 Households	1,503	5,607	8,288
2010 Households	1,510	5,534	8,248
2021 Total Households	1,491	5,411	8,105
2026 Total Households	1,459	5,288	7,930
2000-2010 Annual Rate	0.05%	-0.13%	-0.05%
2010-2021 Annual Rate	-0.11%	-0.20%	-0.16%
2021-2026 Annual Rate	-0.43%	-0.46%	-0.44%
2021 Average Household Size	2.17	2.35	2.41

This information contained herein was obtained from sources deemed to be reliable; however The Retail Companies makes no guarantees, warranties, or representations as to the completeness or accuracy thereof.

CALL FOR PRICING

Bill Clements, CCIM

Bill@TheRetailCompanies.com
205.823.3070

Real Estate Is Our Passion

1841 Montclair Lane, Suite 102
Birmingham, AL 35216

Brooks Corr, CCIM

Brooks@TheRetailCompanies.com
205.823.3080

1.73 ACRES/4,680 SF AVAILABLE

FORMER RUBY TUESDAY

258 HWY 78 W, JASPER, AL 35501

PROPERTY FOR SALE OR LEASE



The
**Retail
Companies**
Real Estate Is Our Passion.

205.823.3030

TheRetailCompanies.com

DEMOGRAPHICS

	1 mile	3 miles	5 miles
Mortgage Income			
2021 Percent of Income for Mortgage	13.2%	14.8%	14.2%
Median Household Income			
2021 Median Household Income	\$50,831	\$46,127	\$47,526
2026 Median Household Income	\$54,993	\$50,249	\$52,104
2021-2026 Annual Rate	1.59%	1.73%	1.86%
Average Household Income			
2021 Average Household Income	\$73,658	\$67,000	\$66,994
2026 Average Household Income	\$79,543	\$73,306	\$73,832
2021-2026 Annual Rate	1.55%	1.82%	1.96%
Per Capita Income			
2021 Per Capita Income	\$30,271	\$27,241	\$27,024
2026 Per Capita Income	\$32,650	\$29,832	\$29,808
2021-2026 Annual Rate	1.52%	1.83%	1.98%

Households by Income

Current median household income is \$47,526 in the area, compared to \$64,730 for all U.S. households. Median household income is projected to be \$52,104 in five years, compared to \$72,932 for all U.S. households

Current average household income is \$66,994 in this area, compared to \$90,054 for all U.S. households. Average household income is projected to be \$73,832 in five years, compared to \$103,679 for all U.S. households

Current per capita income is \$27,024 in the area, compared to the U.S. per capita income of \$34,136. The per capita income is projected to be \$29,808 in five years, compared to \$39,378 for all U.S. households

Housing			
2021 Housing Affordability Index	196	174	182
2000 Total Housing Units	1,699	6,378	9,359
2000 Owner Occupied Housing Units	1,021	3,910	6,082
2000 Renter Occupied Housing Units	482	1,698	2,206
2000 Vacant Housing Units	196	770	1,071
2010 Total Housing Units	1,735	6,257	9,233
2010 Owner Occupied Housing Units	862	3,564	5,671
2010 Renter Occupied Housing Units	648	1,970	2,577
2010 Vacant Housing Units	225	723	985
2021 Total Housing Units	1,763	6,299	9,285
2021 Owner Occupied Housing Units	889	3,613	5,761
2021 Renter Occupied Housing Units	602	1,799	2,345
2021 Vacant Housing Units	272	888	1,180
2026 Total Housing Units	1,747	6,258	9,230
2026 Owner Occupied Housing Units	878	3,573	5,701
2026 Renter Occupied Housing Units	581	1,715	2,229
2026 Vacant Housing Units	288	970	1,300

This information contained herein was obtained from sources deemed to be reliable; however The Retail Companies makes no guarantees, warranties, or representations as to the completeness or accuracy thereof.

CALL FOR PRICING

Bill Clements, CCIM

Bill@TheRetailCompanies.com

205.823.3070

Real Estate Is Our Passion

1841 Montclair Lane, Suite 102

Birmingham, AL 35216

Brooks Corr, CCIM

Brooks@TheRetailCompanies.com

205.823.3080