

1,600 - 8,000 SF FOR LEASE

GROVE PARK SHOPPING CENTER

WEST MAIN STREET DOTHAN, AL 36305

PROPERTY FOR LEASE

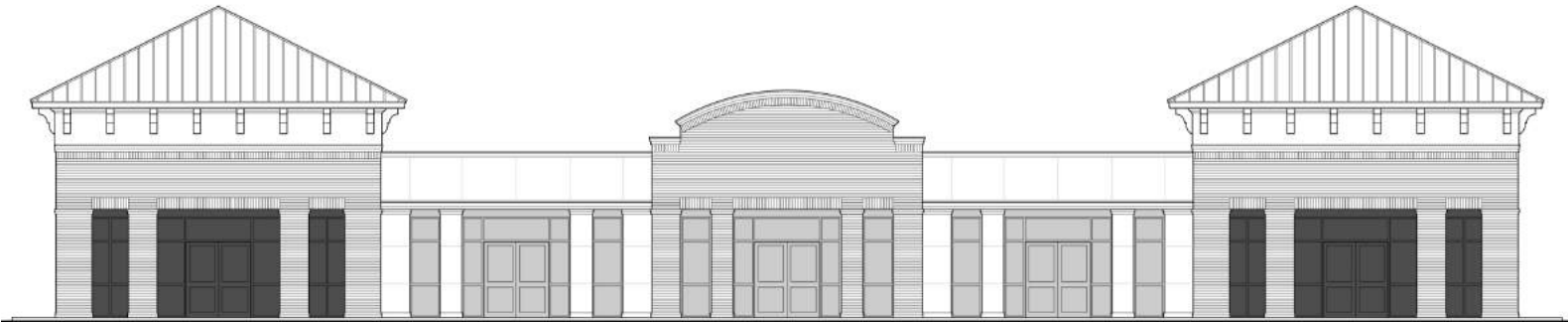


The
**Retail
Companies**
Real Estate Is Our Passion.

205.823.3030

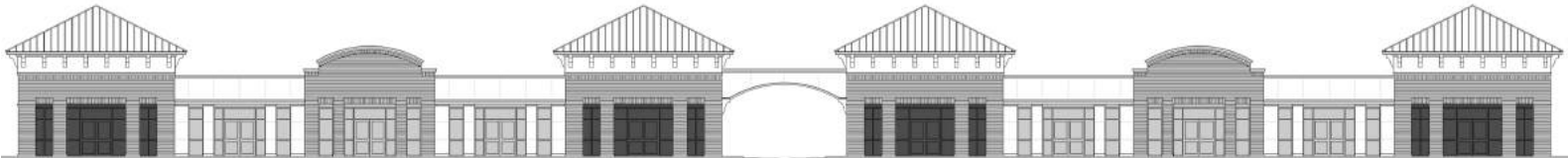
TheRetailCompanies.com

RENDERINGS



PROPOSED FRONT ELEVATION

SCALE: 1/8"=1'-0"



PROPOSED FRONT ELEVATION

SCALE: 1/8"=1'-0"

This information contained herein was obtained from sources deemed to be reliable; however The Retail Companies makes no guarantees, warranties, or representations as to the completeness or accuracy thereof.

CALL FOR PRICING

Bill Clements, CCIM

Bill@TheRetailCompanies.com

205.823.3070

Real Estate Is Our Passion

1841 Montclair Lane, Suite 102

Birmingham, AL 35216

Brooks Corr, CCIM

Brooks@TheRetailCompanies.com

205.823.3080

1,600 - 8,000 SF FOR LEASE

GROVE PARK SHOPPING CENTER

WEST MAIN STREET DOTHAN, AL 36305

PROPERTY FOR LEASE



205.823.3030
TheRetailCompanies.com

AERIAL



QUICK FACTS

- Located along Dothan's most active retail corridors
- Immediate tenants and anchor's include Publix and Flowers Hospital
- Direct visibility from Hwy 84 (33,410 VPD)
- Monument signage potentially available.

Bill Clements, CCIM
Bill@TheRetailCompanies.com
205.823.3070

Real Estate Is Our Passion
1841 Montclair Lane, Suite 102
Birmingham, AL 35216

Brooks Corr, CCIM
Brooks@TheRetailCompanies.com
205.823.3080

1,600 - 8,000 SF FOR LEASE

GROVE PARK SHOPPING CENTER

WEST MAIN STREET DOTHAN, AL 36305

PROPERTY FOR LEASE

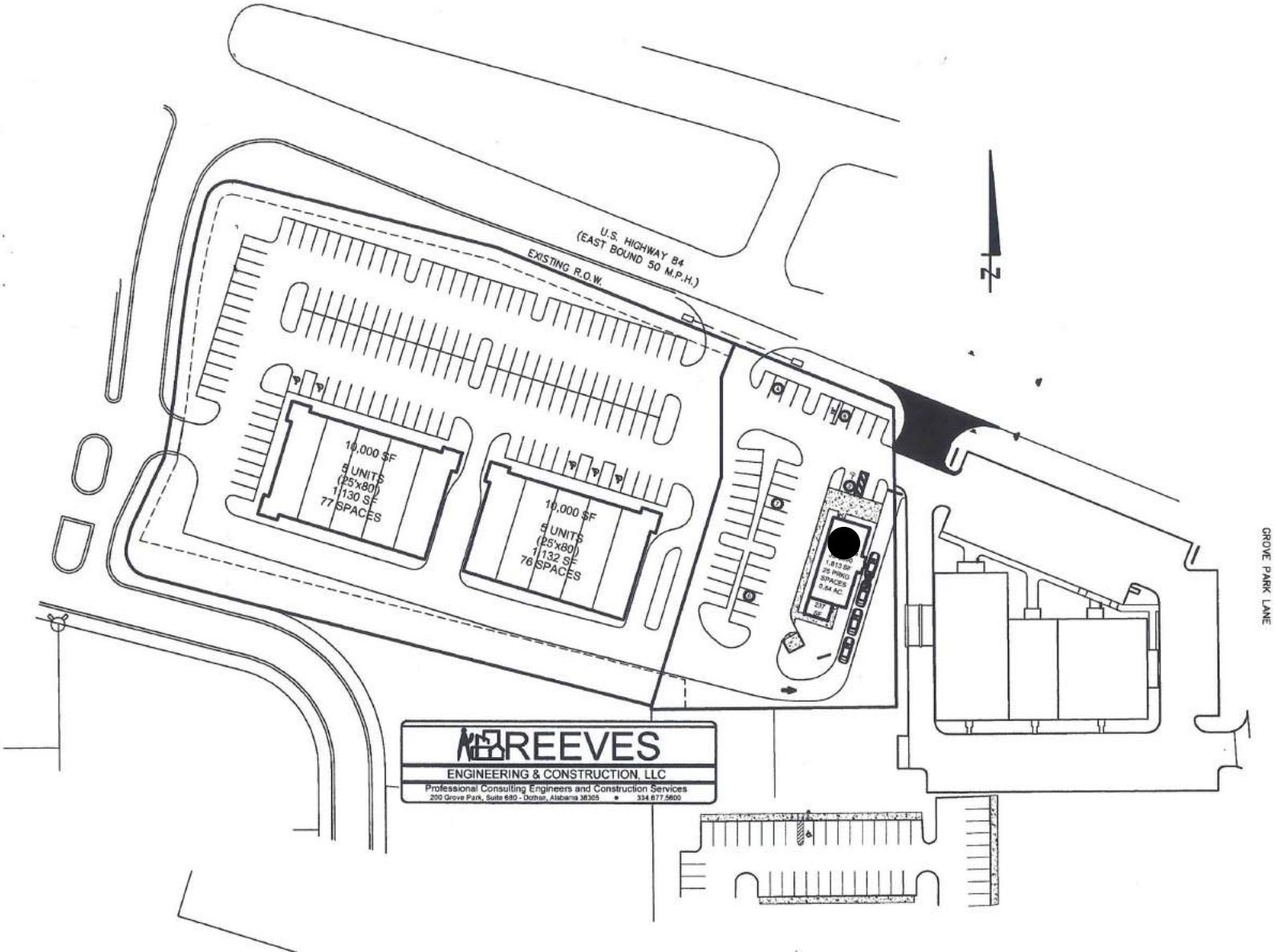


The Retail Companies
Real Estate Is Our Passion.

205.823.3030

TheRetailCompanies.com

SITE PLAN



Bill Clements, CCIM
Bill@TheRetailCompanies.com
205.823.3070

Real Estate Is Our Passion
1841 Montclair Lane, Suite 102
Birmingham, AL 35216

Brooks Corr, CCIM
Brooks@TheRetailCompanies.com
205.823.3080

1,600 - 8,000 SF FOR LEASE

GROVE PARK SHOPPING CENTER

WEST MAIN STREET DOTHAN, AL 36305

PROPERTY FOR LEASE



The
Retail
Companies
Real Estate Is Our Passion.

205.823.3030

TheRetailCompanies.com

DEMOGRAPHICS

	1 mile	3 miles	5 miles
Population			
2000 Population	3,458	21,624	46,652
2010 Population	4,380	27,352	53,346
2018 Population	5,084	29,344	55,312
2023 Population	5,266	30,372	56,431
2000-2010 Annual Rate	2.39%	2.38%	1.35%
2010-2018 Annual Rate	1.82%	0.86%	0.44%
2018-2023 Annual Rate	0.71%	0.69%	0.40%
2018 Male Population	47.4%	47.5%	47.4%
2018 Female Population	52.6%	52.5%	52.6%
2018 Median Age	40.7	41.3	39.3
Median Household Income			
2018 Median Household Income	\$75,088	\$67,864	\$48,487
2023 Median Household Income	\$82,948	\$77,561	\$55,006
2018-2023 Annual Rate	2.01%	2.71%	2.56%
Average Household Income			
2018 Average Household Income	\$99,497	\$94,590	\$72,399
2023 Average Household Income	\$111,872	\$106,951	\$82,516
2018-2023 Annual Rate	2.37%	2.49%	2.65%
Per Capita Income			
2018 Per Capita Income	\$42,333	\$39,225	\$29,959
2023 Per Capita Income	\$47,502	\$44,258	\$34,032
2018-2023 Annual Rate	2.33%	2.44%	2.58%

CALL FOR PRICING

Bill Clements, CCIM
Bill@TheRetailCompanies.com
205.823.3070

Real Estate Is Our Passion
1841 Montclair Lane, Suite 102
Birmingham, AL 35216

Brooks Corr, CCIM
Brooks@TheRetailCompanies.com
205.823.3080