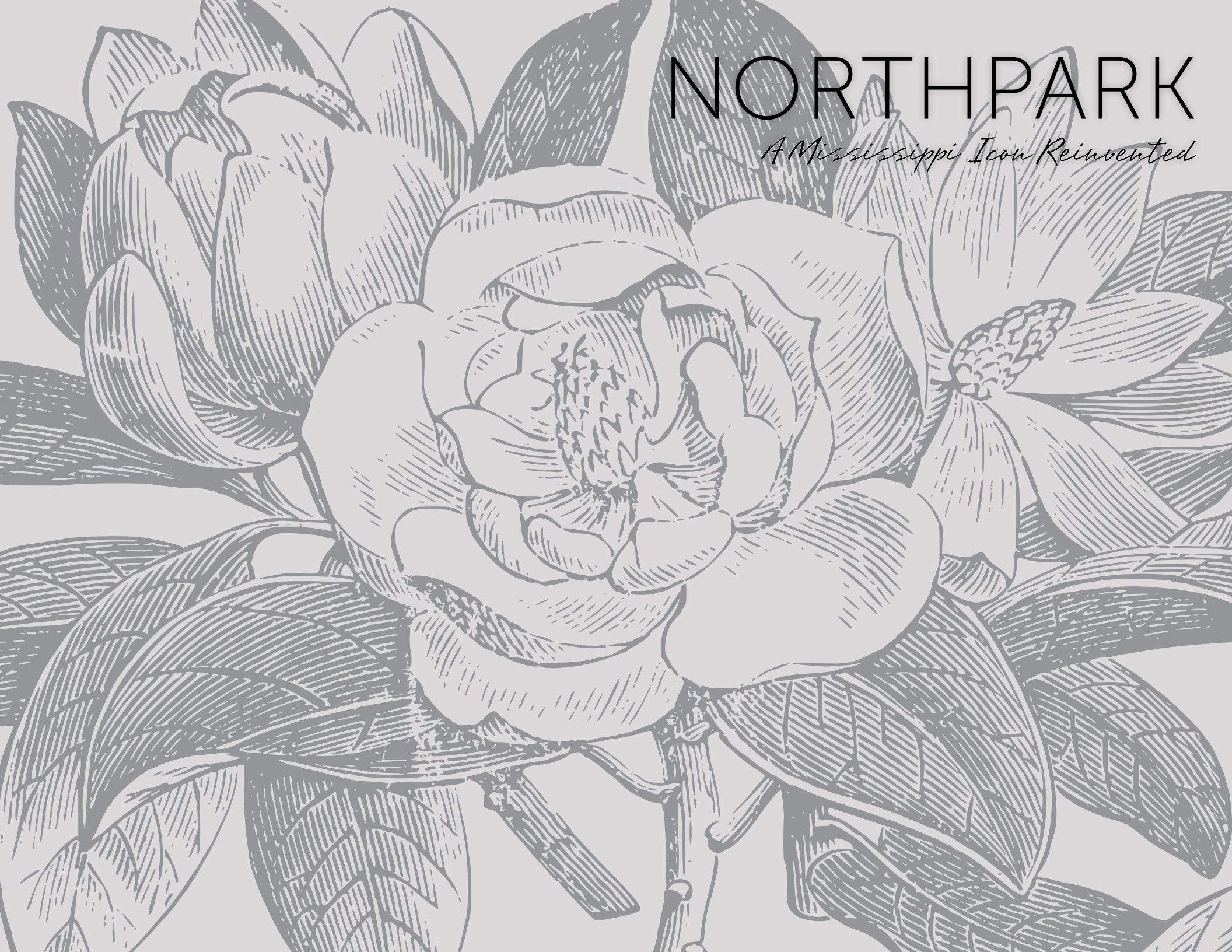


# NORTHPARK

*A Mississippi Icon Reinvented*



# RIDGELAND, MS

An expansive \$20 million 2018 renovation of the property transformed Northpark into the premier shopping destination of Ridgeland, Mississippi. From remodeled entrances and new exterior landscaping to the latest amenities and reimagined open common-area, the center features 120 retailers and a spacious café-style Eatery offering a wide range of dining. With a new state-of-the-art Children's Discovery Park, a new Family Lounge, and large interactive gaming screens, Northpark combines contemporary architecture and design with next generation technology and unmatched Southern charm.

TOTAL SQUARE FEET CENTER GLA

958,314

TOTAL RETAILERS

120

PROJECTED DAILY VISITORS

5,400

ANNUAL TRAFFIC

3.5M

PEOPLE IN JACKSON, METROPOLITAN  
AREA FREQUENT NORTH PARK

40.7%

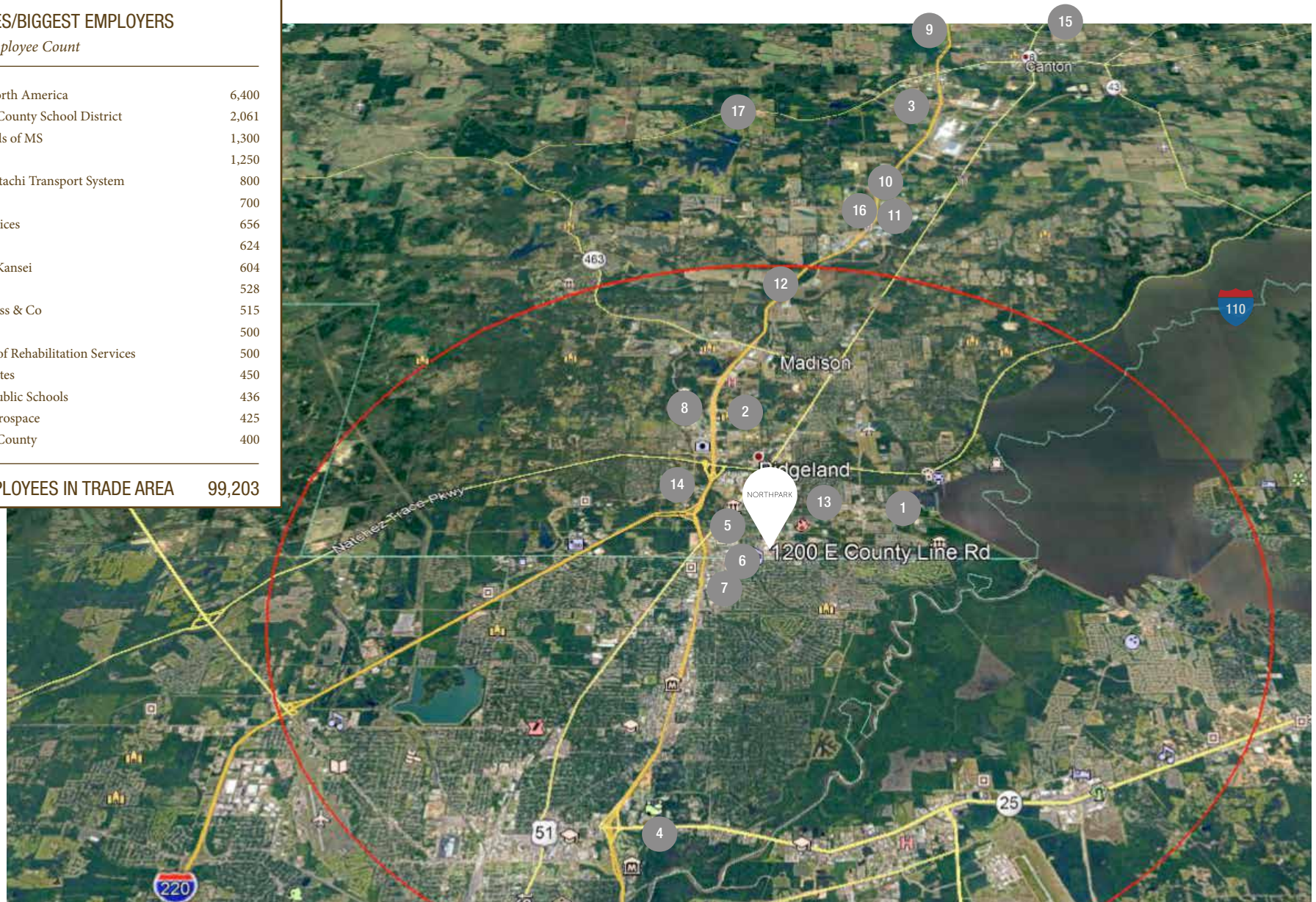




## BUSINESSES/BIGGEST EMPLOYERS

*Sorted by Employee Count*

1. Nissan North America	6,400
2. Madison County School District	2,061
3. Peco Foods of MS	1,300
4. Conduet	1,250
5. Vantec Hitachi Transport System	800
6. Kasai	700
7. Yates Services	656
8. C Spire	624
9. Calsonic Kansei	604
10. Faurecia	528
11. Levi Strauss & Co	515
12. Comcast	500
13. MS Dept of Rehabilitation Services	500
14. Minact Yates	450
15. Canton Public Schools	436
16. Vertex Aerospace	425
17. Madison County	400

**TOTAL EMPLOYEES IN TRADE AREA** 99,203

— 7-Mile Radius

● Notable Companies in the Area



# NORTHPARK

## AERIAL OVERVIEW

NORTHPARK

HIGHLAND ELEMENTARY SCHOOL

RIDGELAND CITY HALL

ANN SMITH ELEMENTARY

RESIDENTIAL

RESIDENCE INN  
STAY HOME  
HILTON GARDEN



TARGET

TARGET

HOME  
DEPOT

THE HOME  
DEPOT

CONN'S  
FURNISHINGS

BURLINGTON  
COAT  
FACTORY

EXIT OFF I55 TO COUNTY LINE ROAD  
114,000 vehicles travel County Line Road from  
Interstate 55 on an annual basis

HILTON JACKSON

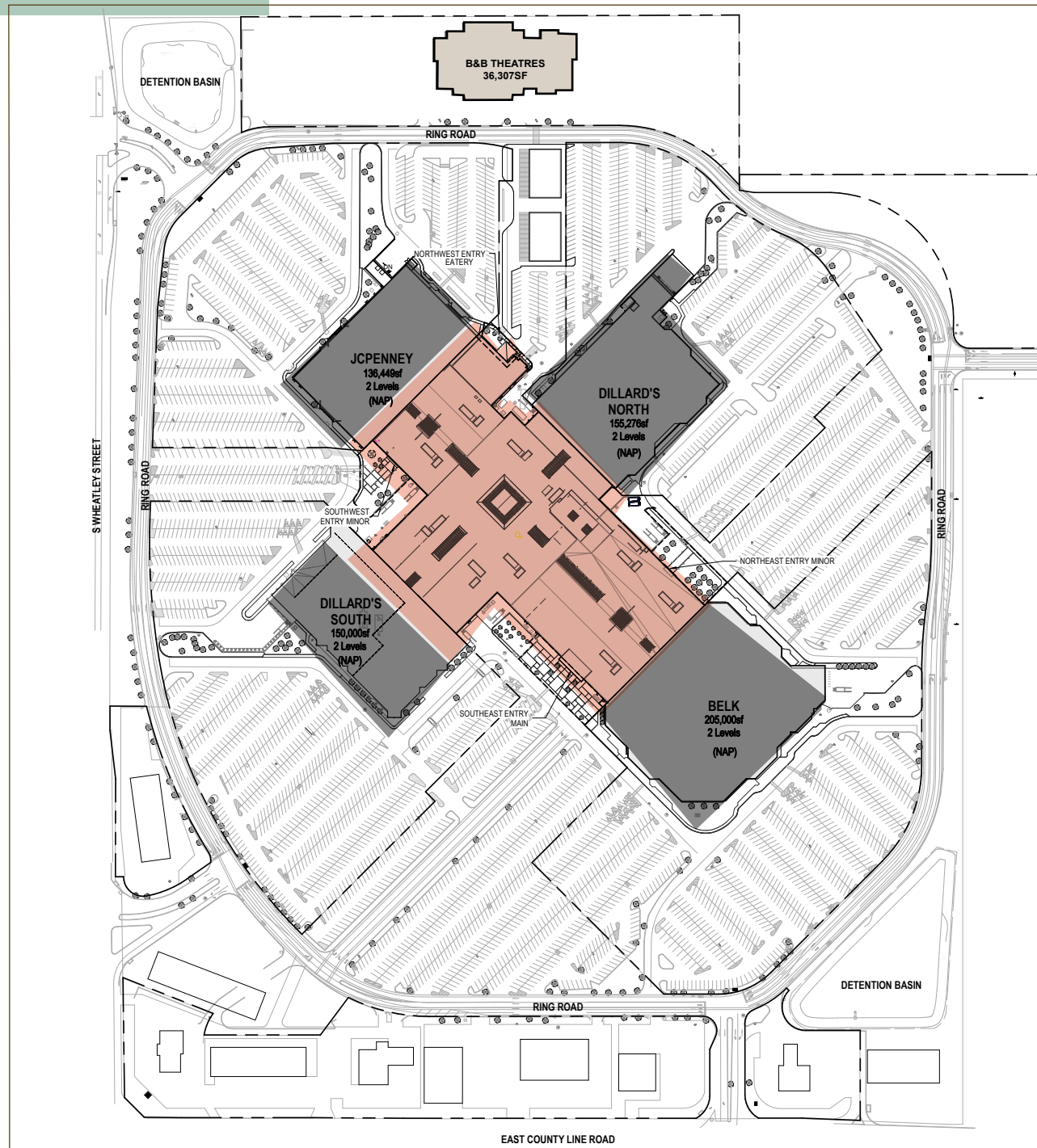
T.J. MAXX,  
MARSHALL'S  
OLD NAVY  
BED, BATH & BEYOND  
AT HOME

RESIDENTIAL

CELEBRATE AMERICAN  
BALLOON GLOW

CHRIST COVENANT  
CHRISTIAN SCHOOL





## PROJECT DATA

## GLA

JCPENNEY	136,449
DILLARD'S NORTH	155,276
DILLARD'S SOUTH	150,000
BELK	205,000
Total Department Store GLA	646,725

Total Small Shops GLA 311,589

Total GLA 958,314

Outlots  
B&B Theatres 36,307

TOTAL PROPOSED OUTLOTS 15,000

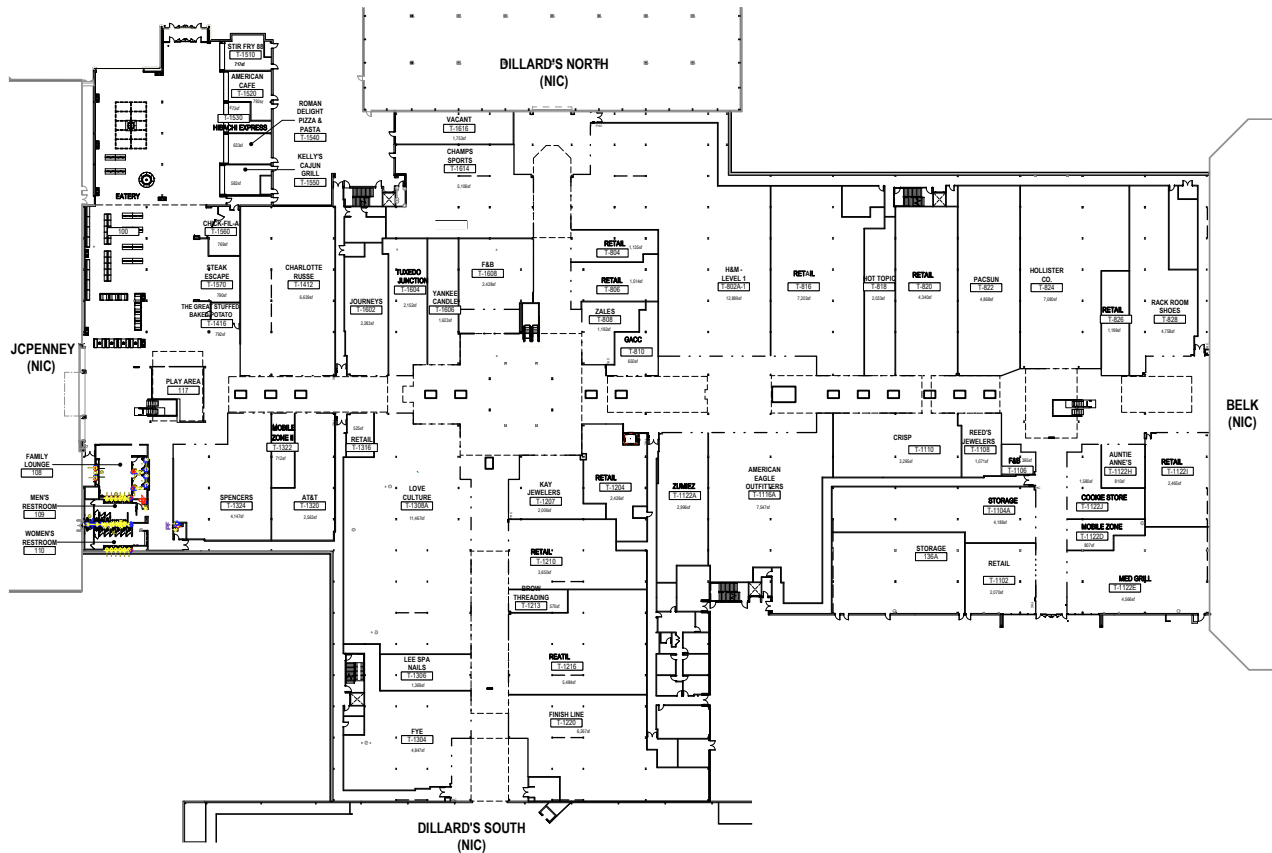
TOTAL PARKING SPACES: 4,859

- Anchors/Department Stores
- Small Shops
- Outlots

NORTHPARK

# LEASE PLAN

## LOWER LEVEL



# KEY TENANTS



H&M

REEDS  
*Jewelers*

White Barn

HOLLISTER

JCPenney

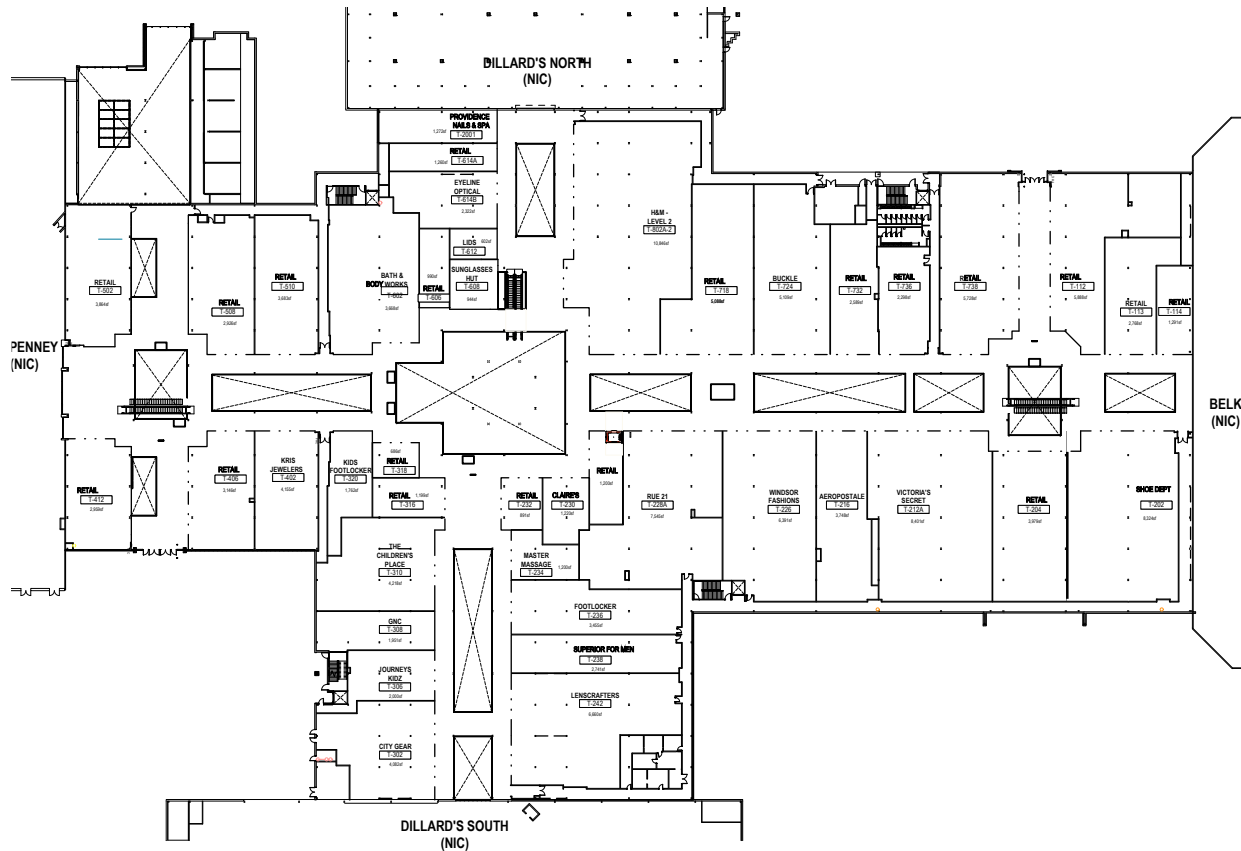
Dillard's

belk

NORTHPARK

# LEASE PLAN

UPPER LEVEL



## KEY TENANTS

Bath & Body Works®

VICTORIA'S  
SECRET

FOREVER 21®

KAY  
JEWELERS

Buckle 

Finish  line.

SHOE DEPT.  
ENCORE

 Chick-fil-A®

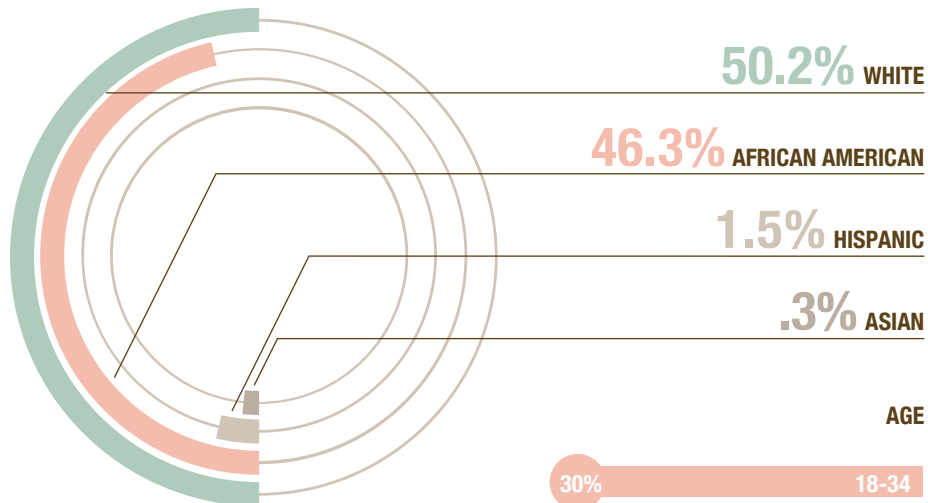


NORTHPARK

# DEMOGRAPHICS

TOTAL POPULATION 10 MILES

251,508



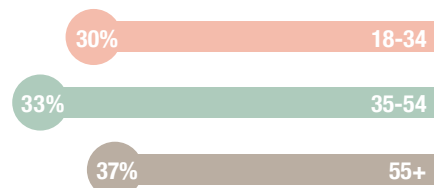
50.2% WHITE

46.3% AFRICAN AMERICAN

1.5% HISPANIC

.3% ASIAN

## AGE



TOTAL STUDENT COUNT = 14,811

HOME OWNERSHIP = 68.7%

EMPLOYED FULL OR PART TIME = 57.5%

98,780

TOTAL  
HOUSEHOLDS

\$74,191

AVERAGE  
HOUSEHOLD INCOME

689,844

TRI-COUNTY  
AREA POPULATION





NORTHPARK

# AT A GLANCE





NORTHPARK

# AT A GLANCE





NORTHPARK

# DISTINCTION



## BALLOON GLOW

4TH OF JULY CELEBRATION AND 25+ YEAR TRADITION  
INCLUDES A CONCERT, FOOD VENDORS, A KID'S PLAY AREA,  
DIGITAL KIDS WALL, FIREWORKS AND HOT AIR BALLOONS

25,000+ PEOPLE

## KIDS' MOVIE SERIES

NORTHPARK'S POPULAR MOVIE SERIES

200%

EATERY SALES INCREASE REPORTED AT EACH EVENT



## EATERY MEDIA WALL

LARGE FORMAT LED SCREEN TO SHOWCASE  
CUSTOM ART, ADVERTISING, GAMING EVENTS,  
AND MOVIE SCREENINGS



## BUTTERFLY EFFECT MURAL

PARTNERSHIP WITH NATIONAL PHILANTHROPIC  
ORGANIZATION TO EFFECT CHANGE  
THROUGH SOCIAL MEDIA





NORTHPARK

# FAMILY AMENITIES

## CUSTOM INTERACTIVE GAMING WALL

FEATURES THREE UNIQUE GAMES DESIGNED  
TO INCREASE DWELL TIME



## DISCOVERY PARK

ALL-NEW PLAY AREA DESIGNED FOR CHILDREN UNDER 12 YEARS OLD



## FAMILY LOUNGE

NEW FAMILY LOUNGE TO RELAX AND REFUEL



# CONTACT US

## NATIONAL LEASING

**Stephen Cassella, Clifton Realty Management**

201-694-3210

[scassella@cliftonrm.com](mailto:scassella@cliftonrm.com)

## REGIONAL LEASING

**Brooks W. Corr, CCIM**

205-568-0710

[brooks@theretailcompanies.com](mailto:brooks@theretailcompanies.com)

**Bill Clements, CCIM**

205-529-6484

[bill@theretailcompanies.com](mailto:bill@theretailcompanies.com)

## NORTH PARK | A PACIFIC RETAIL PROPERTY

1200 East County Line Road Ridgeland, MS 39157 | 601.863.2300 | [visitnorthpark.com](http://visitnorthpark.com)

   @ShopNorthparkMS

