

0.36 ACRES FOR LEASE

3116 TIMBERLAKE DRIVE

3116 TIMBERLAKE DRIVE, VESTAVIA HILLS, AL 35243

PROPERTY FOR LEASE



205.823.3030

TheRetailCompanies.com



PROPERTY PHOTOS

HOUSE IS TENANT-OCCUPIED. PLEASE DO NOT DISTURB TENANT.

This information contained herein was obtained from sources deemed to be reliable; however The Retail Companies makes no guarantees, warranties, or representations as to the completeness or accuracy thereof.

CALL FOR PRICING

Bill Clements, CCIM
Bill@TheRetailCompanies.com
205.823.3070

Real Estate Is Our Passion
1841 Montclair Lane, Suite 102
Birmingham, AL 35216

Brooks Corr, CCIM
Brooks@TheRetailCompanies.com
205.823.3080

0.36 ACRES FOR LEASE

3116 TIMBERLAKE DRIVE

3116 TIMBERLAKE DRIVE, VESTAVIA HILLS, AL 35243



205.823.3030
TheRetailCompanies.com

PROPERTY FOR LEASE



AERIAL

QUICK FACTS

- Located in one of Vestavia's fastest growing submarkets
- Nearby Grandview Medical Campus – ideal for medical use
- Close access to I-459 and US-280
- Publix and Life Time Fitness are across the street
- 16,000 VPD on Acton Road

Bill Clements, CCIM
Bill@TheRetailCompanies.com
205.823.3070

Real Estate Is Our Passion
1841 Montclair Lane, Suite 102
Birmingham, AL 35216

Brooks Corr, CCIM
Brooks@TheRetailCompanies.com
205.823.3080

0.36 ACRES FOR LEASE

3116 TIMBERLAKE DRIVE

3116 TIMBERLAKE DRIVE, VESTAVIA HILLS, AL 35243

PROPERTY FOR LEASE

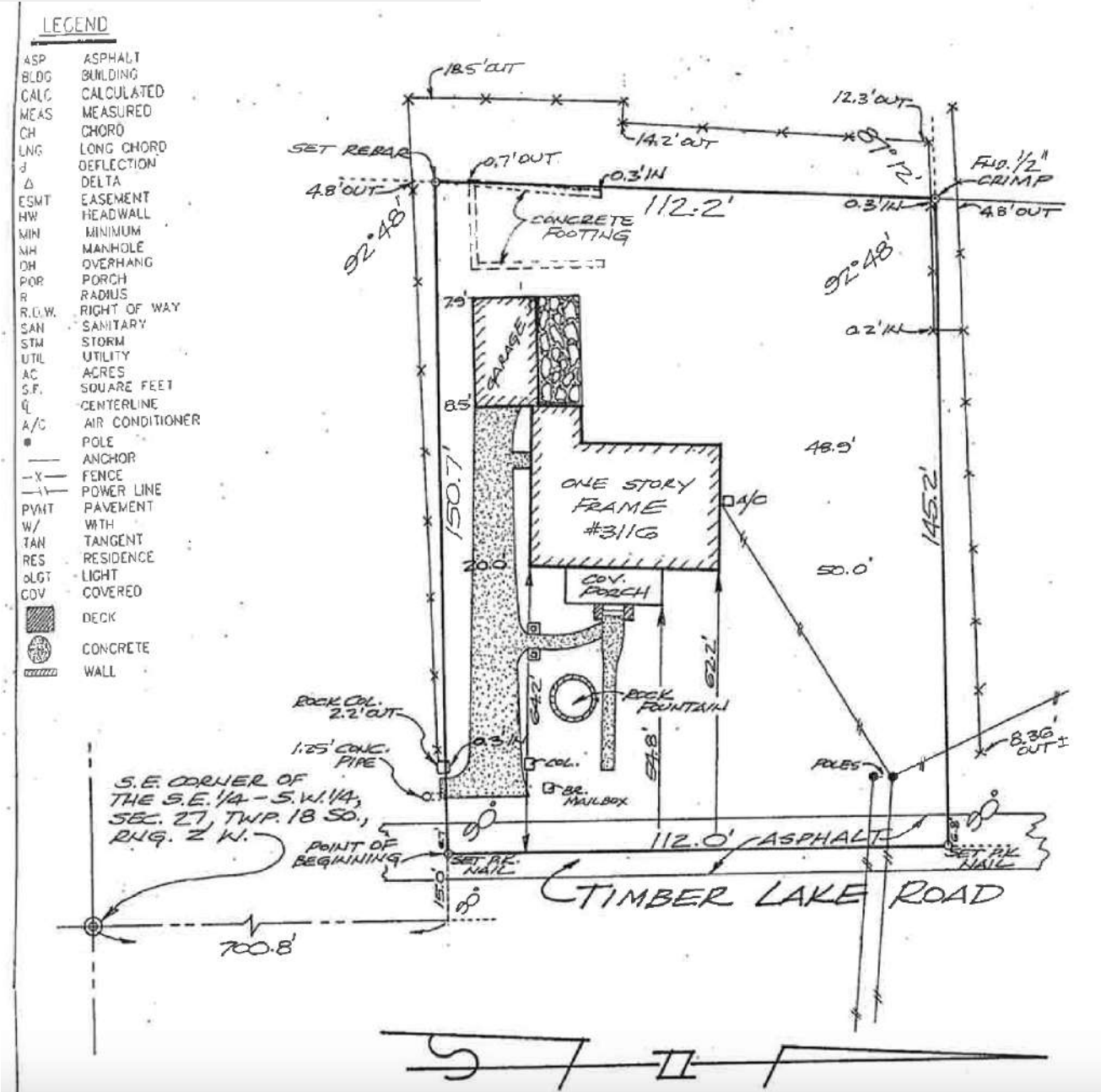


The Retail Companies
Real Estate Is Our Passion.

205.823.3030

TheRetailCompanies.com

SITE PLAN AND AVAILABLE SPACES



Bill Clements, CCIM
Bill@TheRetailCompanies.com
205.823.3070

Real Estate Is Our Passion
1841 Montclair Lane, Suite 102
Birmingham, AL 35216

Brooks Corr, CCIM
Brooks@TheRetailCompanies.com
205.823.3080

0.36 ACRES FOR LEASE

3116 TIMBERLAKE DRIVE

3116 TIMBERLAKE DRIVE, VESTAVIA HILLS, AL 35243

PROPERTY FOR LEASE



The Retail Companies
Real Estate Is Our Passion.

205.823.3030

TheRetailCompanies.com

DEMOGRAPHICS

	1 mile	3 miles	5 miles
Population			
2000 Population	3,221	36,857	111,562
2010 Population	3,812	42,599	125,399
2019 Population	5,017	46,957	134,744
2024 Population	5,548	49,404	139,582
2000-2010 Annual Rate	1.70%	1.46%	1.18%
2010-2019 Annual Rate	3.01%	1.06%	0.78%
2019-2024 Annual Rate	2.03%	1.02%	0.71%
2019 Male Population	47.9%	48.3%	48.1%
2019 Female Population	52.1%	51.7%	51.9%
2019 Median Age	38.1	39.6	38.0
	1 mile	3 miles	5 miles
Mortgage Income			
2019 Percent of Income for Mortgage	24.7%	23.3%	21.4%
Median Household Income			
2019 Median Household Income	\$69,732	\$79,156	\$82,389
2024 Median Household Income	\$79,140	\$87,399	\$91,111
2019-2024 Annual Rate	2.56%	2.00%	2.03%
Average Household Income			
2019 Average Household Income	\$104,317	\$120,969	\$124,484
2024 Average Household Income	\$116,544	\$132,143	\$136,206
2019-2024 Annual Rate	2.24%	1.78%	1.82%
Per Capita Income			
2019 Per Capita Income	\$50,190	\$54,181	\$51,738
2024 Per Capita Income	\$55,881	\$59,202	\$56,541
2019-2024 Annual Rate	2.17%	1.79%	1.79%

CALL FOR PRICING

Bill Clements, CCIM
Bill@TheRetailCompanies.com
205.823.3070

Real Estate Is Our Passion
1841 Montclair Lane, Suite 102
Birmingham, AL 35216

Brooks Corr, CCIM
Brooks@TheRetailCompanies.com
205.823.3080