

FREESTANDING OR MULTI TENANT

HOOVER HIGHWAY 31

1539 MONTGOMERY HIGHWAY HOOVER, AL 35216

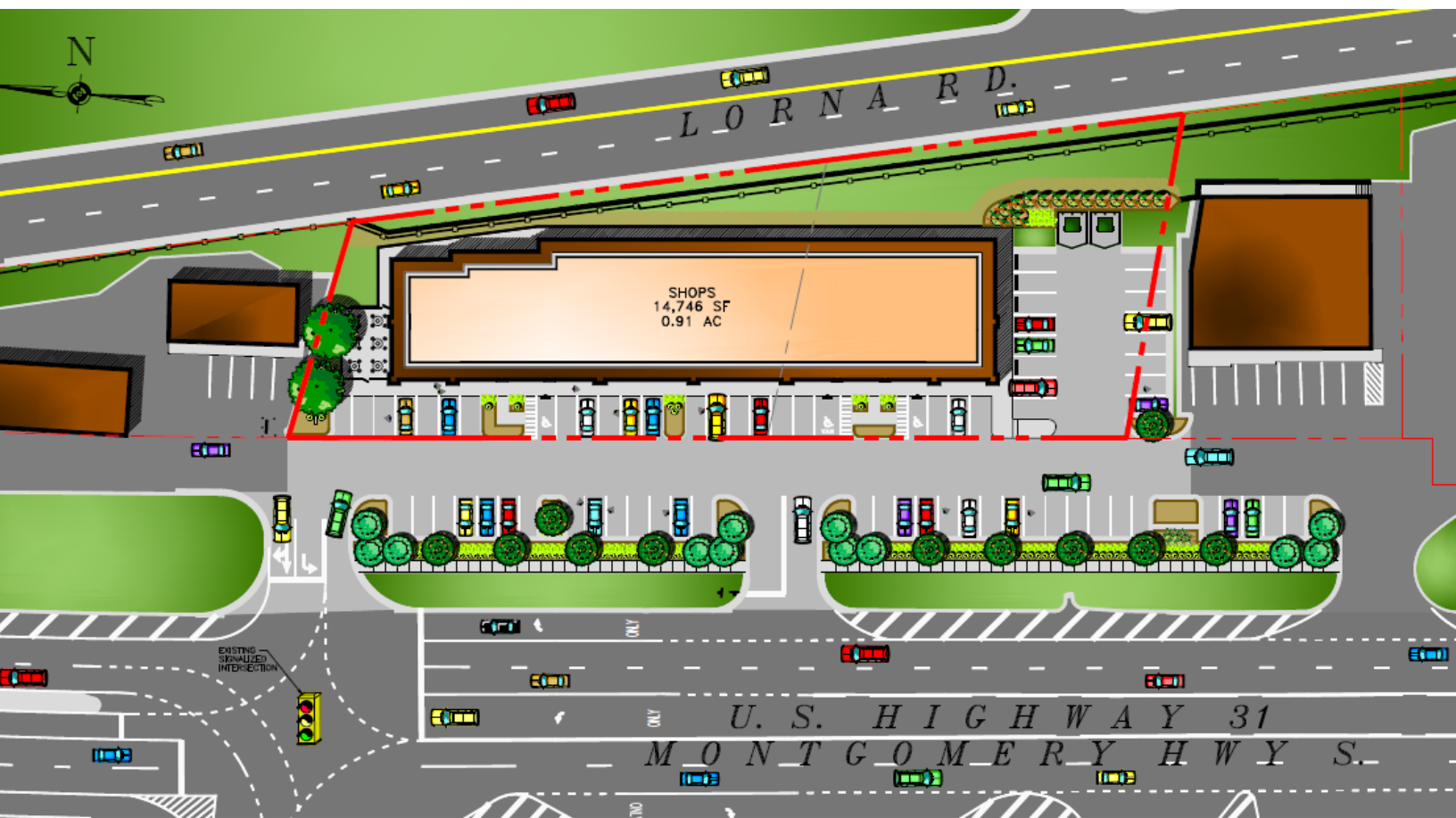
GROUND LEASE/BTS



The
**Retail
Companies**
Real Estate Is Our Passion.

205.823.3030

TheRetailCompanies.com



This information contained herein was obtained from sources deemed to be reliable; however The Retail Companies makes no guarantees, warranties, or representations as to the completeness or accuracy thereof.

CALL FOR PRICING

Bill Clements, CCIM

Bill@TheRetailCompanies.com

205.823.3070

Real Estate Is Our Passion

1841 Montclair Lane, Suite 102

Birmingham, AL 35216

Brooks Corr, CCIM

Brooks@TheRetailCompanies.com

205.823.3080

FREESTANDING OR MULTI TENANT

HOOVER HIGHWAY 31

1539 MONTGOMERY HIGHWAY HOOVER, AL 35216

GROUND LEASE/BTS

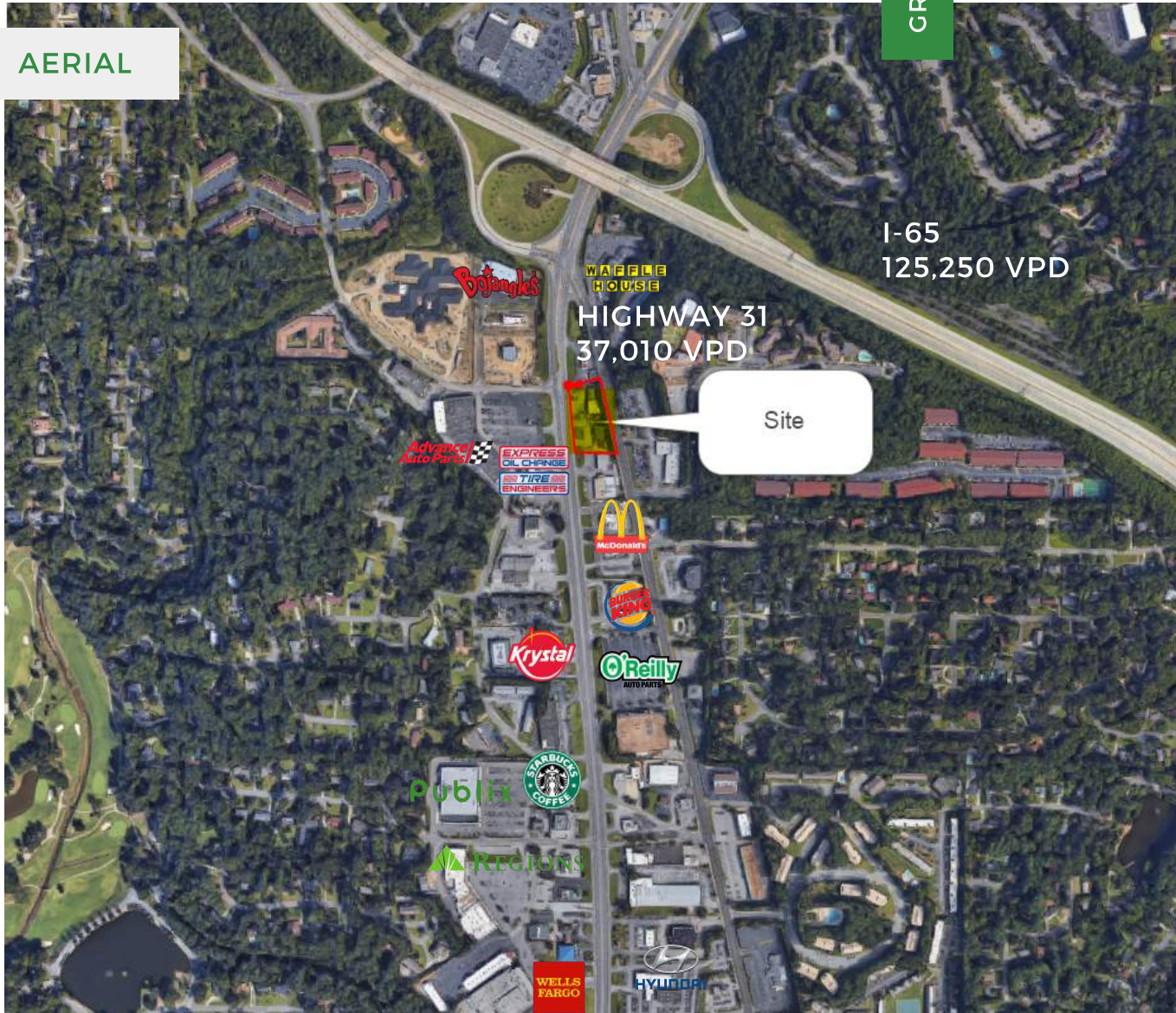


The
**Retail
Companies**
Real Estate Is Our Passion.

205.823.3030

TheRetailCompanies.com

AERIAL



QUICK FACTS

- Located along one of Hoover's most active retail corridors
- Interstate and highway visibility at a lighted interchange
- Various space and building size opportunities with potential drive-thru's
- 150,000+ population within five miles

Bill Clements, CCIM
Bill@TheRetailCompanies.com
205.823.3070

Real Estate Is Our Passion
1841 Montclair Lane, Suite 102
Birmingham, AL 35216

Brooks Corr, CCIM
Brooks@TheRetailCompanies.com
205.823.3080

FREESTANDING OR MULTI TENANT

HOOVER HIGHWAY 31

1539 MONTGOMERY HIGHWAY HOOVER, AL 35216

SITE PLAN

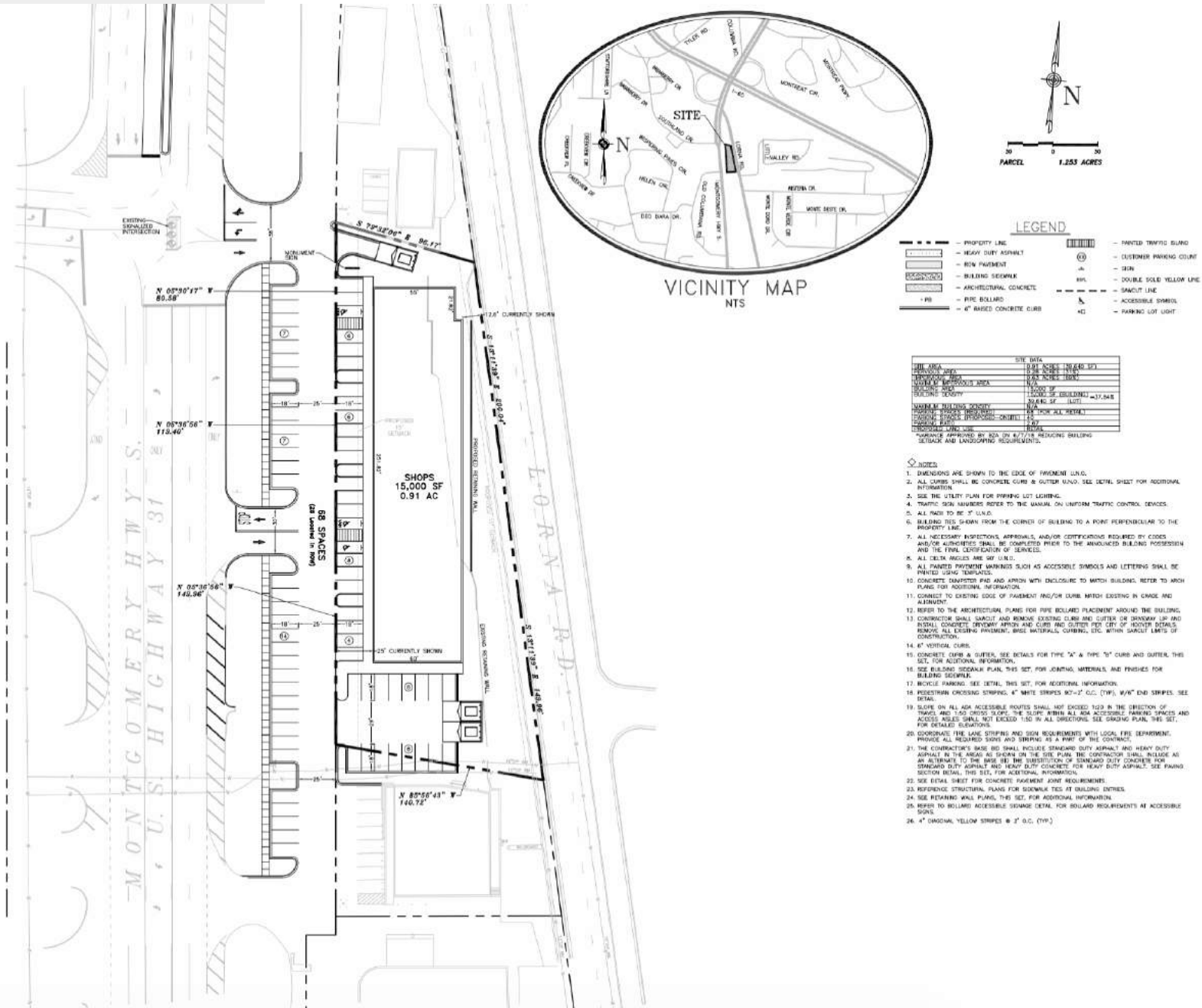
GROUND LEASE/BTS



The
**Retail
Companies**
Real Estate Is Our Passion.

205.823.3030

TheRetailCompanies.com



CALL FOR PRICING

Bill Clements, CCIM
Bill@TheRetailCompanies.com
205.823.3070

Real Estate Is Our Passion
1841 Montclair Lane, Suite 102
Birmingham, AL 35216

Brooks Corr, CCIM
Brooks@TheRetailCompanies.com
205.823.3080

FREESTANDING OR MULTI TENANT

HOOVER HIGHWAY 31

1539 MONTGOMERY HIGHWAY HOOVER, AL 35216

GROUND LEASE/BTS



The
Retail
Companies
Real Estate Is Our Passion.

205.823.3030

TheRetailCompanies.com

DEMOGRAPHICS

	1 mile	3 miles	5 miles
Population			
2000 Population	8,575	61,594	122,908
2010 Population	8,744	68,778	138,604
2018 Population	8,830	70,914	147,781
2023 Population	8,882	72,269	152,357
2000-2010 Annual Rate	0.20%	1.11%	1.21%
2010-2018 Annual Rate	0.12%	0.37%	0.78%
2018-2023 Annual Rate	0.12%	0.38%	0.61%
2018 Male Population	47.4%	47.9%	47.8%
2018 Female Population	52.6%	52.1%	52.2%
2018 Median Age	37.7	36.3	36.5
Median Household Income			
2018 Median Household Income	\$59,465	\$66,552	\$69,593
2023 Median Household Income	\$66,043	\$75,626	\$77,718
2018-2023 Annual Rate	2.12%	2.59%	2.23%
Average Household Income			
2018 Average Household Income	\$86,550	\$93,801	\$99,704
2023 Average Household Income	\$95,536	\$103,159	\$108,883
2018-2023 Annual Rate	2.00%	1.92%	1.78%
Per Capita Income			
2018 Per Capita Income	\$38,903	\$39,687	\$41,779
2023 Per Capita Income	\$42,913	\$43,519	\$45,506
2018-2023 Annual Rate	1.98%	1.86%	1.72%
Households by Income			

CALL FOR PRICING

Bill Clements, CCIM
Bill@TheRetailCompanies.com
205.823.3070

Real Estate Is Our Passion
1841 Montclair Lane, Suite 102
Birmingham, AL 35216

Brooks Corr, CCIM
Brooks@TheRetailCompanies.com
205.823.3080