

2,000 - 6,000 SF FOR LEASE

TRUSSVILLE HWY 11 RETAIL

2039 GADSDEN ROAD (HWY 11), TRUSSVILLE AL 35235

PROPERTY FOR LEASE



205.823.3030
TheRetailCompanies.com

PROPERTY PHOTO



*Stock photo (not proposed rendering)

This information contained herein was obtained from sources deemed to be reliable; however The Retail Companies makes no guarantees, warranties, or representations as to the completeness or accuracy thereof.

CALL FOR PRICING

Bill Clements, CCIM
Bill@TheRetailCompanies.com
205.823.3070

Real Estate Is Our Passion
1841 Montclair Lane, Suite 102
Birmingham, AL 35216

Brooks Corr, CCIM
Brooks@TheRetailCompanies.com
205.823.3080

2,000 - 6,000 SF FOR LEASE

TRUSSVILLE HWY 11 RETAIL

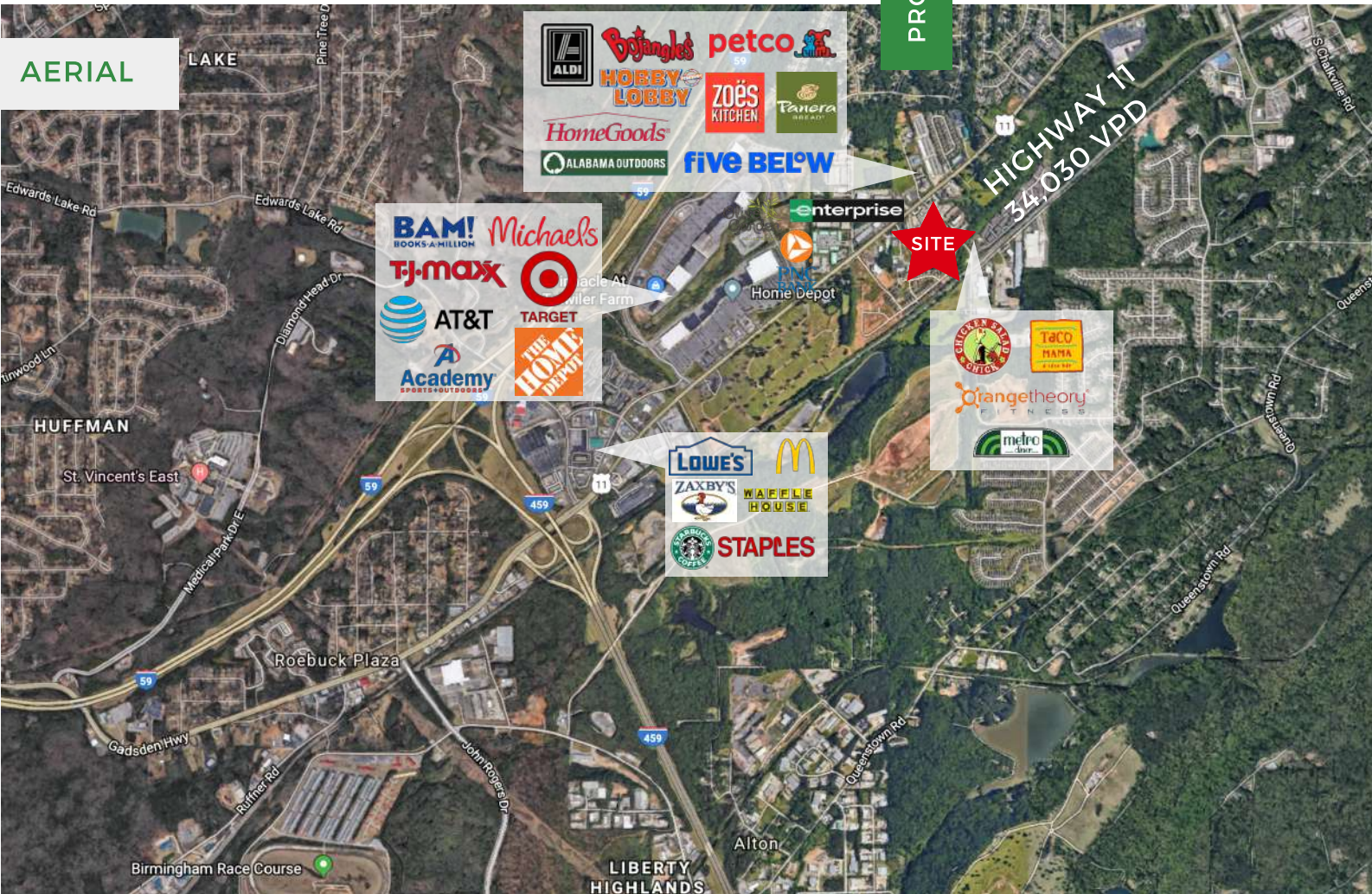
2039 GADSDEN ROAD (HWY 11), TRUSSVILLE AL 35235



205.823.3030
TheRetailCompanies.com

PROPERTY FOR LEASE

AERIAL



QUICK FACTS

- New construction / BTS opportunity
- Located in front of from Homestead Village (Hobby Lobby, Home Goods, Petco, Panera Bread, & Zoe's Kitchen)
- Strategically positioned between major retail and downtown Trussville redevelopment district
- Excellent visibility and access from Hwy 11
- 0.27 acre lot
- Pylon signage available

Bill Clements, CCIM
Bill@TheRetailCompanies.com
205.823.3070

Real Estate Is Our Passion
1841 Montclair Lane, Suite 102
Birmingham, AL 35216

Brooks Corr, CCIM
Brooks@TheRetailCompanies.com
205.823.3080

2,000 - 6,000 SF FOR LEASE

TRUSSVILLE HWY 11 RETAIL

2039 GADSDEN ROAD (HWY 11), TRUSSVILLE AL 35235

PROPERTY FOR LEASE

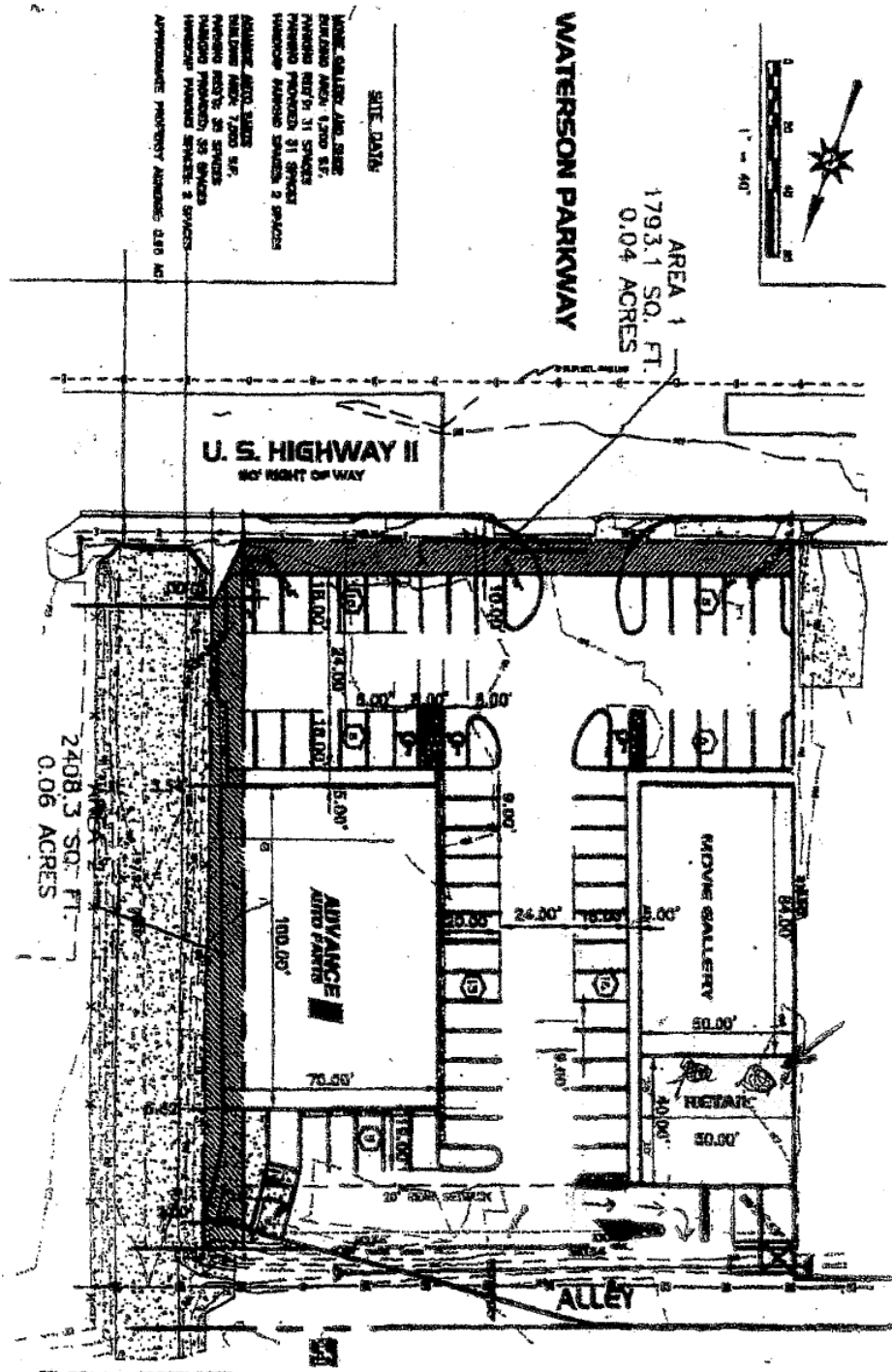


The
Retail
Companies
Real Estate Is Our Passion.

205.823.3030

TheRetailCompanies.com

SITE PLAN



Bill Clements, CCIM
Bill@TheRetailCompanies.com
205.823.3070

Real Estate Is Our Passion
1841 Montclair Lane, Suite 102
Birmingham, AL 35216

Brooks Corr, CCIM
Brooks@TheRetailCompanies.com
205.823.3080

2,000 - 6,000 SF FOR LEASE

TRUSSVILLE HWY 11 RETAIL

2039 GADSDEN ROAD (HWY 11), TRUSSVILLE AL 35235

PROPERTY FOR LEASE



The
Retail
Companies
Real Estate Is Our Passion.

205.823.3030

TheRetailCompanies.com

DEMOGRAPHICS

	1 mile	3 miles	5 miles
Population			
2000 Population	4,349	24,443	70,026
2010 Population	5,824	28,885	77,386
2019 Population	5,933	29,199	78,198
2024 Population	5,951	29,494	78,734
2000-2010 Annual Rate	2.96%	1.68%	1.00%
2010-2019 Annual Rate	0.20%	0.12%	0.11%
2019-2024 Annual Rate	0.06%	0.20%	0.14%
2019 Male Population	46.8%	46.9%	46.8%
2019 Female Population	53.2%	53.1%	53.2%
2019 Median Age	40.8	39.5	38.0
	1 mile	3 miles	5 miles
Mortgage Income			
2019 Percent of Income for Mortgage	15.0%	14.3%	12.9%
Median Household Income			
2019 Median Household Income	\$77,785	\$65,289	\$55,950
2024 Median Household Income	\$84,702	\$72,570	\$62,380
2019-2024 Annual Rate	1.72%	2.14%	2.20%
Average Household Income			
2019 Average Household Income	\$100,731	\$85,231	\$74,903
2024 Average Household Income	\$112,425	\$96,977	\$86,400
2019-2024 Annual Rate	2.22%	2.62%	2.90%
Per Capita Income			
2019 Per Capita Income	\$39,907	\$33,056	\$28,684
2024 Per Capita Income	\$44,637	\$37,605	\$33,043
2019-2024 Annual Rate	2.27%	2.61%	2.87%

CALL FOR PRICING

Bill Clements, CCIM
Bill@TheRetailCompanies.com
205.823.3070

Real Estate Is Our Passion
1841 Montclair Lane, Suite 102
Birmingham, AL 35216

Brooks Corr, CCIM
Brooks@TheRetailCompanies.com
205.823.3080